



1168 Levelling Caster Series

King Kong Wheel (black) Wheel Diameter × Wheel Width 62.5×45 mm

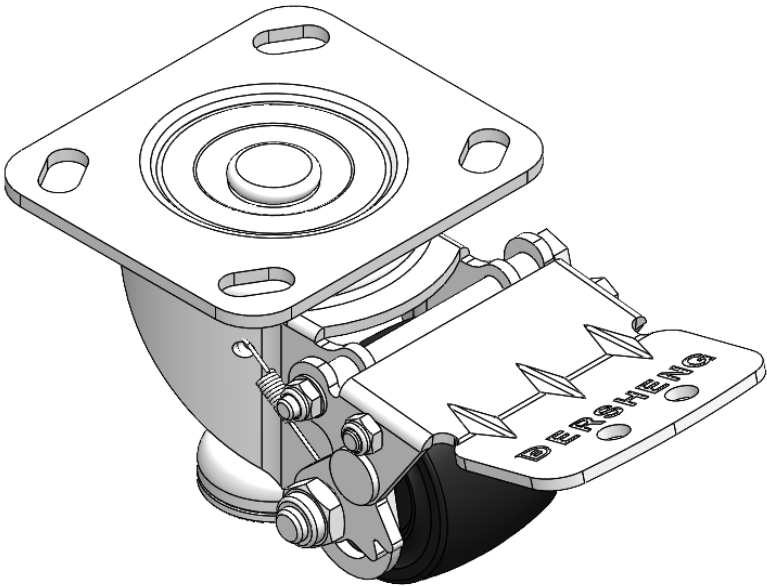
EAN

YJ-11680250712033

Height Adjustable Leveling Caster. Top Plate Riveted and Stamping 85 x 70mm (3-3/8" x 2-3/4") Bolt Hole Spacing, Long Pedal. Zine-Plated, Top Plate (4T) Mounting Type mechanism with Height Adjustable Stand. Reinforced Polypropylene and tread. Black, Bearing—Ball Bearing.

Wheel Tread: Thermoplastic (POK)
Wheel Center: Thermoplastic (POK)

Drawings are for reference only and may differ from the product



Picture may differ from original product

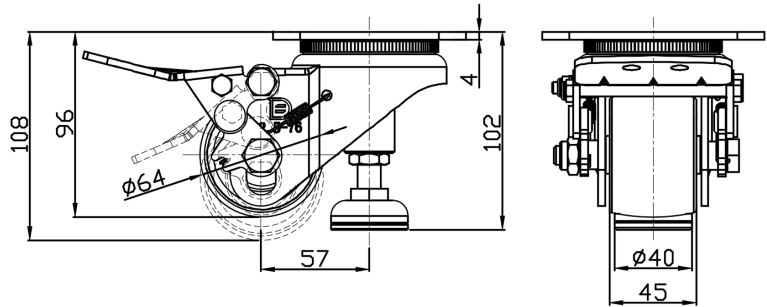
Technical Data

<input checked="" type="radio"/> Metric <input type="radio"/> Imperial	
Wheel Diameter	64mm
Wheel Width	45mm
Wheel Bearing	Wheels With Ball Bearings
Plate Size	115 x 100mm
Bolt Hole Spacing	85 x 70mm
Plate Hole	20 x 11mm
Offset	57mm
Swivel Interference	302mm
Overall Height	102mm
Swivel Radius	151mm
Hardness Of Tread	75±5° Shore D
Load Capacity (Dynamic)	200kgs
Load Capacity (Static)	1000kgs
Temperature	-20°C to +80°C
Fork Type	Swivel Caster
Stainless	N/A
Electrical Conductivity	N/A
Anti-Static	N/A
Weight	1.98kgs
Standard	ISO22883

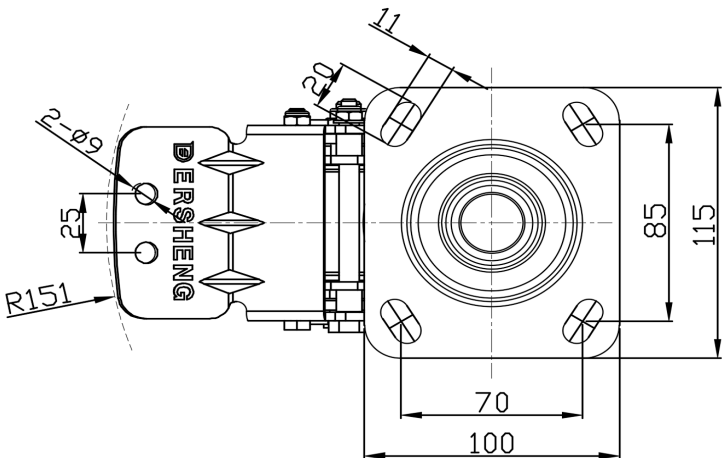
Advantages at a glance

Rolling Resistance	● ● ● ● ●
Operating Noise	● ● ○ ○ ○
Floor Surface Preservation	● ● ○ ○ ○

Dimensions



Mounting



* For any deviation between metric and imperial spec, please refer to the metric spec.