



1168 Levelling Caster Series

ZQPU (milling blue) Wheel Diameter × Wheel Width 75×20 (41.5) mm

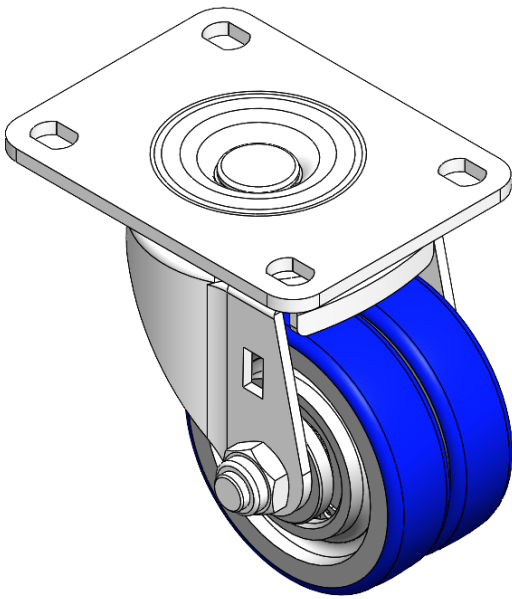
EAN

YJ-11680250802053

Swivel Caster with Riveted, Stamping Fork and European standard holes. Zine-Plated, Top Plate (4T) Mounting Type system. Cast Iron Wheel Center, High Quality Polyurethane tread. Blue color, Bearing—Ball Bearing.

Wheel Tread: high quality polyurethane
Wheel Center: cast iron core

Drawings are for reference only and may differ from the product



Picture may differ from original product

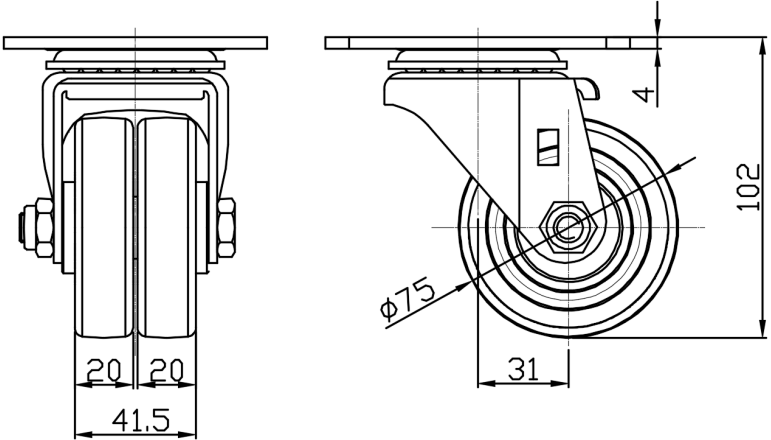
Technical Data

<input checked="" type="radio"/> Metric <input type="radio"/> Imperial	
Wheel Diameter	75mm
Wheel Width	41.5mm
Wheel Bearing	Wheels With Ball Bearings
Plate Size	104 x 80mm
Bolt Hole Spacing	81 x 59mm
Plate Hole	12 x 9mm
Offset	31mm
Swivel Interference	140mm
Overall Height	102mm
Swivel Radius	70mm
Hardness Of Tread	87±5° Shore A
Load Capacity (Dynamic)	300kgs
Load Capacity (Static)	450kgs
Temperature	-20°C to +70°C
Fork Type	Swivel Caster
Stainless	N/A
Electrical Conductivity	N/A
Anti-Static	N/A
Weight	1.41kgs
Standard	ISO22883

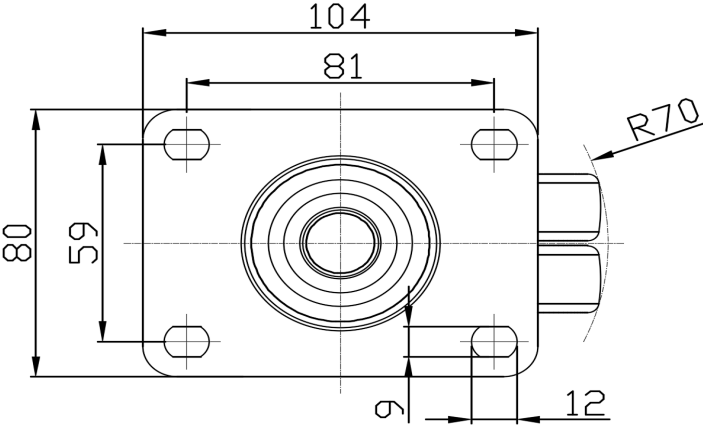
Advantages at a glance

Rolling Resistance	● ● ● ● ●
Operating Noise	● ● ● ● ●
Floor Surface Preservation	● ● ● ● ●

Dimensions



Mounting



* For any deviation between metric and imperial spec, please refer to the metric spec.