



1168 Levelling Caster Series

MRC (black) Wheel Diameter × Wheel Width 75 x 45 mm

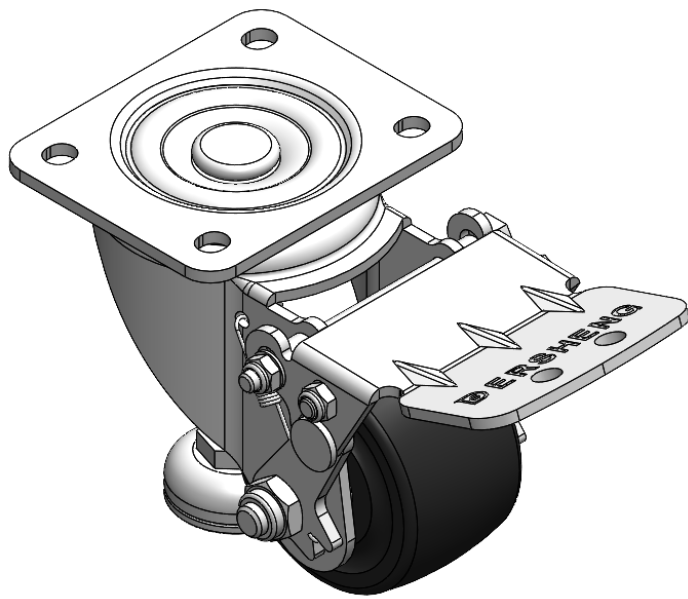
EAN

YJ-11680300052013

Height Adjustable Leveling Caster, Top Plate with Riveted, Fork 44.5 x 30mm (1-3/4" x 1-1/8") Bolt Hole Spacing, Long Pedal Zine-Plated, Mounting Type - Top Plate, Height Adjustable Stand Reinforced Polypropylene and tread Black, Bearing with Ball Bearing.

Wheel Tread: Thermoplastic (PA6)  
Wheel Center: Thermoplastic (PA6)

Drawings are for reference only and may differ from the product



Picture may differ from original product

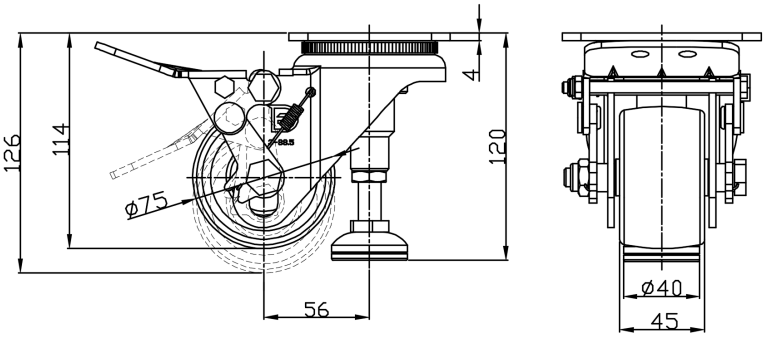
Technical Data

<input checked="" type="radio"/> Metric <input type="radio"/> Imperial	
Wheel Diameter	75mm
Wheel Width	45mm
Wheel Bearing	Wheels With Ball Bearings
Plate Size	105 x 85mm
Bolt Hole Spacing	80 x 60mm
Plate Hole	10.5 x 9mm
Offset	56mm
Swivel Interference	302mm
Overall Height	120mm
Swivel Radius	151mm
Hardness Of Tread	75±5° Shore D
Load Capacity (Dynamic)	260kgs
Load Capacity (Static)	1000kgs
Temperature	-20°C to +80°C
Fork Type	Swivel Caster
Stainless	N/A
Electrical Conductivity	N/A
Anti-Static	N/A
Weight	1.93kgs
Standard	ISO22883

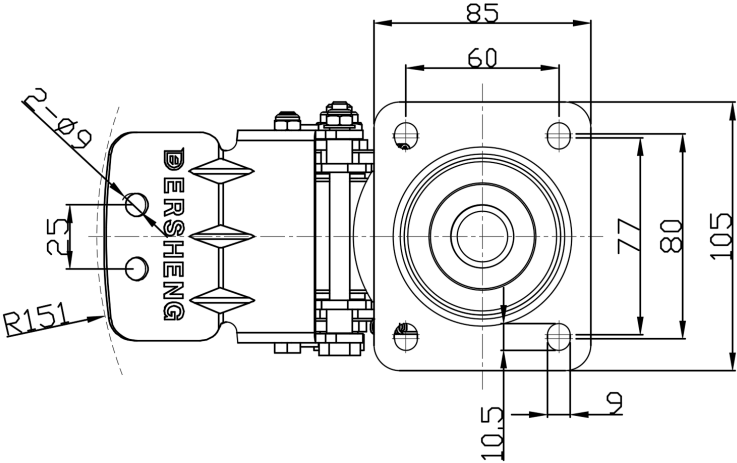
Advantages at a glance

Rolling Resistance	● ● ● ● ●
Operating Noise	● ● ○ ○ ○
Floor Surface Preservation	● ● ○ ○ ○

Dimensions



Mounting



\* For any deviation between metric and imperial spec, please refer to the metric spec.