

1168 Levelling Caster Series

QPU (brown round) Wheel Diameter × Wheel Width 75 × 45mm

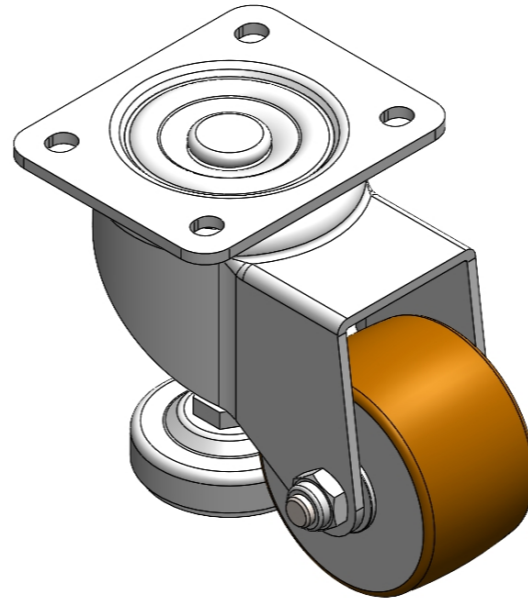
EAN

YJ-11680300532073

Swivel Caster with Riveted Fork and Stamping bracket—European standard holes. Zine-Plated, Mounting Type - Top Plate, Height Adjustable Stand. Cast Iron Wheel Center, High Quality Polyurethane tread. Brown color, Bearing—Ball Bearing.

Wheel Tread: high quality polyurethane
Wheel Center: cast iron core

Drawings are for reference only and may differ from the product



Picture may differ from original product

Technical Data

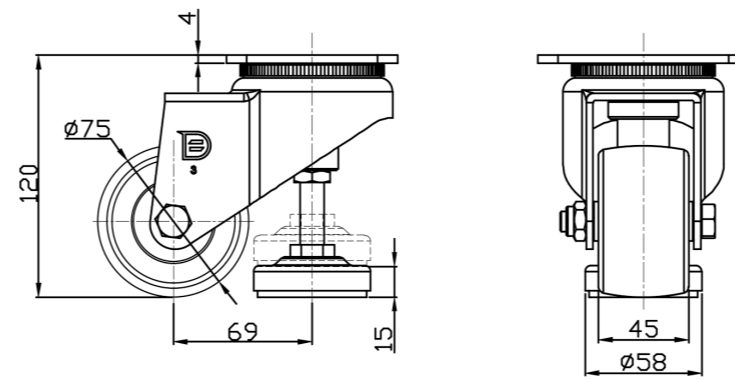
Metric Imperial

Wheel Diameter	75mm
Wheel Width	45mm
Wheel Bearing	Wheels With Ball Bearings
Plate Size	105 x 85mm
Bolt Hole Spacing	80 x 60mm
Plate Hole	10.5 x 9mm
Offset	69mm
Swivel Interference	214mm
Overall Height	120mm
Swivel Radius	107mm
Hardness Of Tread	92±5° Shore A
Load Capacity (Dynamic)	220kgs
Load Capacity (Static)	1000kgs
Temperature	-20°C to +70°C
Fork Type	Swivel Caster
Stainless	N/A
Electrical Conductivity	N/A
Anti-Static	N/A
Weight	1.97kgs
Standard	ISO22883

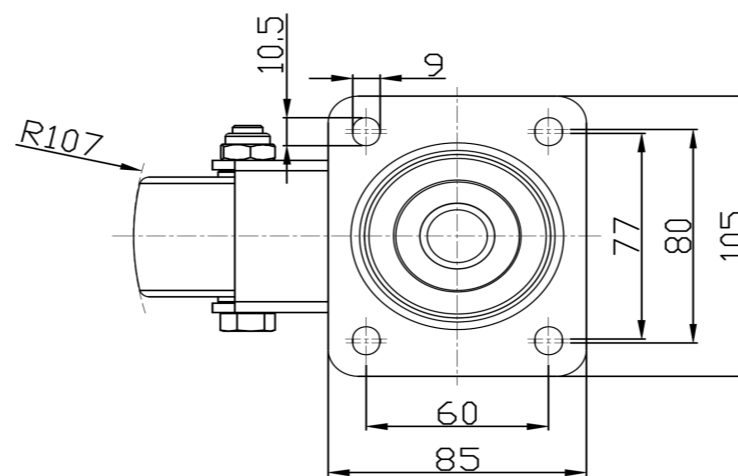
Advantages at a glance

Rolling Resistance	•••••
Operating Noise	•••••
Floor Surface Preservation	•••••

Dimensions



Mounting



* For any deviation between metric and imperial spec, please refer to the metric spec.