



1168 Levelling Caster Series

QPU (brown round) Wheel Diameter × Wheel Width 75 × 45mm

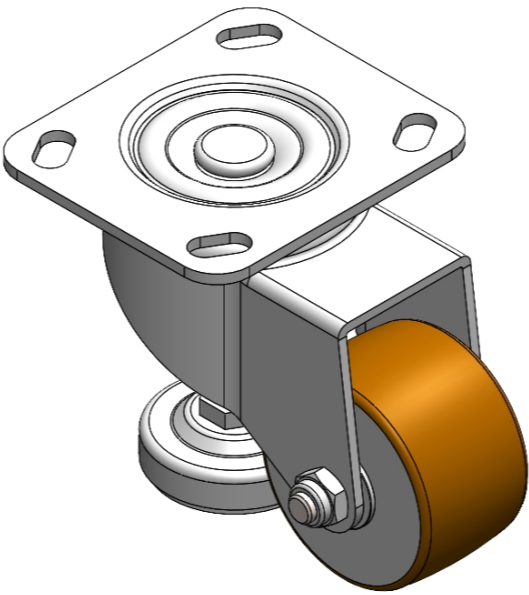
EAN

YJ-11680300532083

Swivel Caster with Riveted Fork and Stamping Fork with D-shaped hole. Zine-Plated, Fork-mounted Mounting Type with Height Adjustable Stand. Cast Iron Wheel Center with High Quality Polyurethane tread. Brown color, Bearing with Ball Bearing.

Wheel Tread: high quality polyurethane
Wheel Center: cast iron core

Drawings are for reference only and may differ from the product



Picture may differ from original product

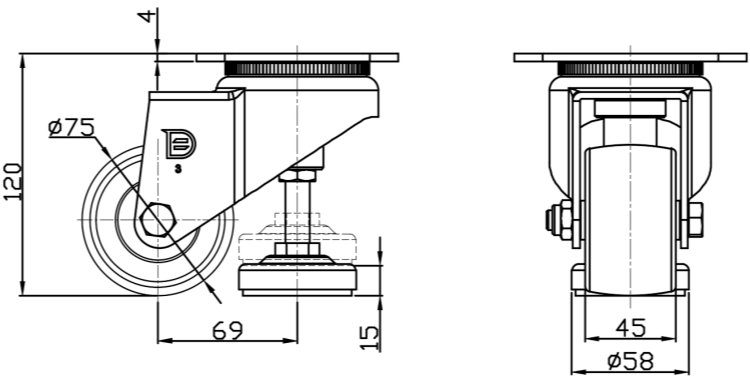
Technical Data

<input checked="" type="radio"/> Metric <input type="radio"/> Imperial	
Wheel Diameter	75mm
Wheel Width	45mm
Wheel Bearing	Wheels With Ball Bearings
Plate Size	115 x 100mm
Bolt Hole Spacing	85 x 70mm
Plate Hole	20 x 11mm
Offset	69mm
Swivel Interference	214mm
Overall Height	120mm
Swivel Radius	107mm
Hardness Of Tread	92±5° Shore A
Load Capacity (Dynamic)	220kgs
Load Capacity (Static)	1000kgs
Temperature	-20°C to +70°C
Fork Type	Swivel Caster
Stainless	N/A
Electrical Conductivity	N/A
Anti-Static	N/A
Weight	2.02kgs
Standard	ISO22883

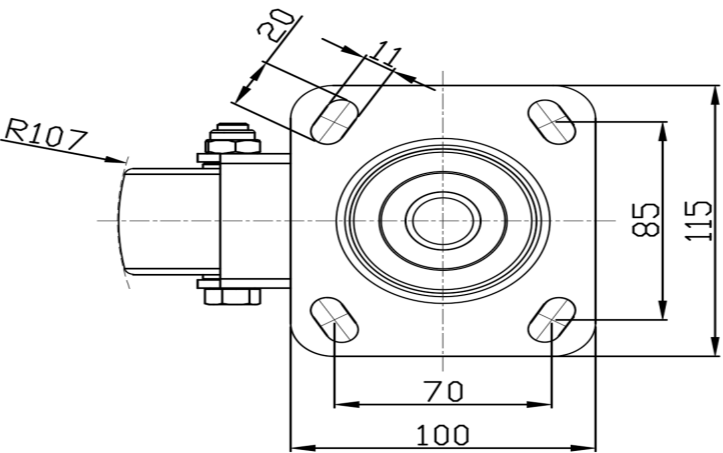
Advantages at a glance

Rolling Resistance	● ● ● ● ●
Operating Noise	● ● ● ● ●
Floor Surface Preservation	● ● ● ● ●

Dimensions



Mounting



* For any deviation between metric and imperial spec, please refer to the metric spec.