



1168 Levelling Caster Series

ZQPU (milling blue) Wheel Diameter × Wheel Width 75×20 (41.5) mm

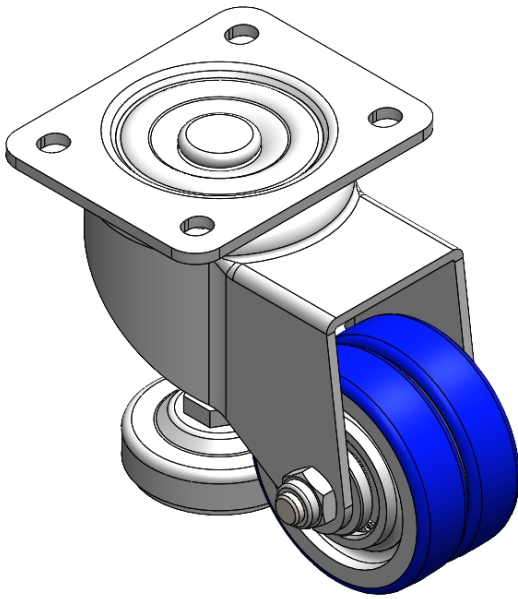
EAN

YJ-11680300802073

Swivel Caster with Riveted, Stamping Fork 44.5 x 30mm (1-3/4" x 1-1/8") Bolt Hole Spacing. Zine-Plated, Mounting Type - Top Plate, Height Adjustable Stand. Cast Iron Wheel Center with High Quality Polyurethane tread. Blue color. Bearing: Ball Bearing.

Wheel Tread: high quality polyurethane
Wheel Center: cast iron core

Drawings are for reference only and may differ from the product



Picture may differ from original product

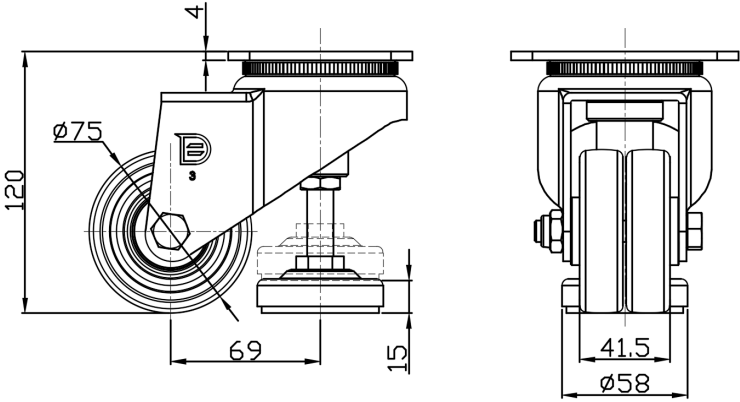
Technical Data

<input checked="" type="radio"/> Metric <input type="radio"/> Imperial	
Wheel Diameter	75mm
Wheel Width	41.5mm
Wheel Bearing	Wheels With Ball Bearings
Plate Size	105 x 85mm
Bolt Hole Spacing	80 x 60mm
Plate Hole	10.5 x 9mm
Offset	69mm
Swivel Interference	214mm
Overall Height	120mm
Swivel Radius	107mm
Hardness Of Tread	87±5° Shore A
Load Capacity (Dynamic)	220kgs
Load Capacity (Static)	1000kgs
Temperature	-20°C to +70°C
Fork Type	Swivel Caster
Stainless	N/A
Electrical Conductivity	N/A
Anti-Static	N/A
Weight	1.97kgs
Standard	ISO22883

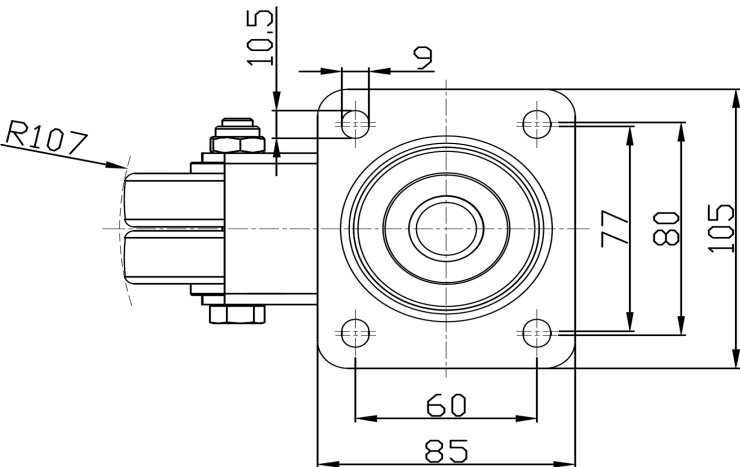
Advantages at a glance

Rolling Resistance	● ● ● ● ●
Operating Noise	● ● ● ● ●
Floor Surface Preservation	● ● ● ● ●

Dimensions



Mounting



* For any deviation between metric and imperial spec, please refer to the metric spec.