



1168 Levelling Caster Series

ZQPU (milling blue) Wheel Diameter × Wheel Width 75×20 (41.5) mm

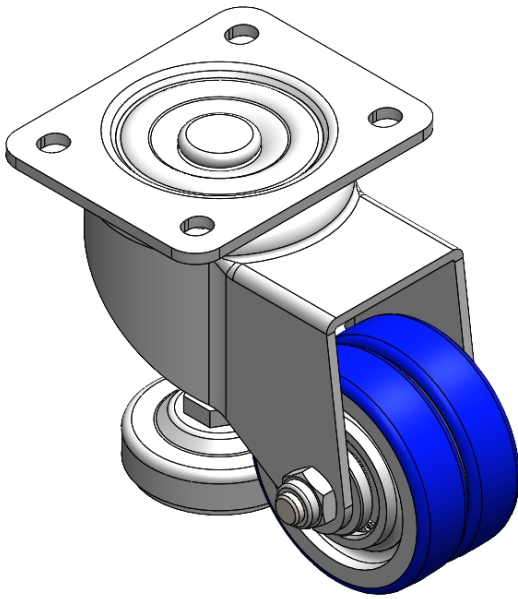
EAN

YJ-11680300802073

Swivel Caster with Riveted, Stamping Fork 44.5 x 30mm (1-3/4" x 1-1/8") Bolt Hole Spacing. Zine-Plated, Mounting Type - Top Plate, Height Adjustable Stand. Cast Iron Wheel Center with High Quality Polyurethane tread. Blue color. Bearing: Ball Bearing.

Wheel Tread: high quality polyurethane  
Wheel Center: cast iron core

Drawings are for reference only and may differ from the product



Picture may differ from original product

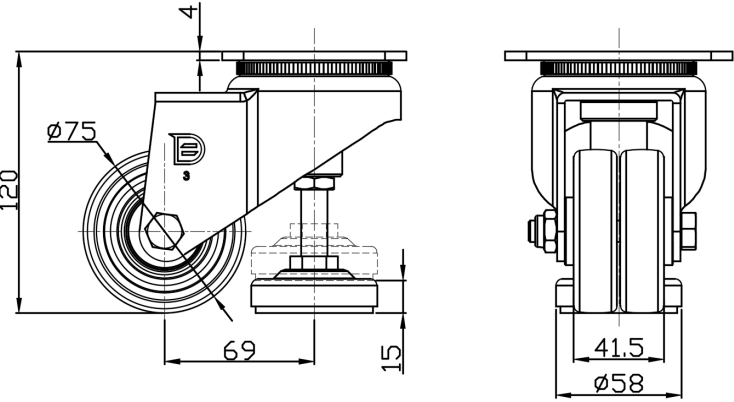
Technical Data

<input checked="" type="radio"/> Imperial <input type="radio"/> Metric	
Wheel Diameter	3 "
Wheel Width	1-11/16 "
Wheel Bearing	Wheels With Ball Bearings
Plate Size	4-3/16 " x 3-7/16 "
Bolt Hole Spacing	3-3/16 " x 2-7/16 "
Plate Hole	3/8 " x 23/64 "
Offset	2-3/4 "
Swivel Interference	8-1/2 "
Overall Height	4-13/16 "
Swivel Radius	4-1/4 "
Hardness Of Tread	87±5° Shore A
Load Capacity (Dynamic)	485lbs
Load Capacity (Static)	2205lbs
Temperature	-4°F to +158°F
Fork Type	Swivel Caster
Stainless	N/A
Electrical Conductivity	N/A
Anti-Static	N/A
Weight	4.3lbs
Standard	ISO22883

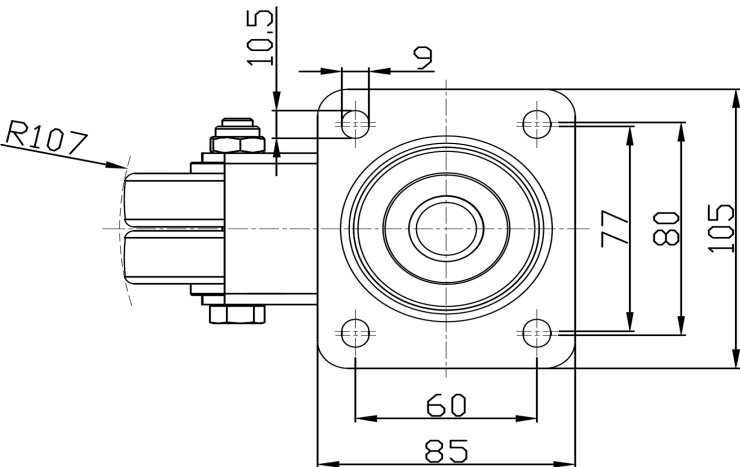
Advantages at a glance

Rolling Resistance	● ● ● ● ●
Operating Noise	● ● ● ● ●
Floor Surface Preservation	● ● ● ● ●

Dimensions



Mounting



\* For any deviation between metric and imperial spec, please refer to the metric spec.