



1168 Levelling Caster Series

MRC (Transparent) Wheel Diameter × Wheel Width 100 x 32mm

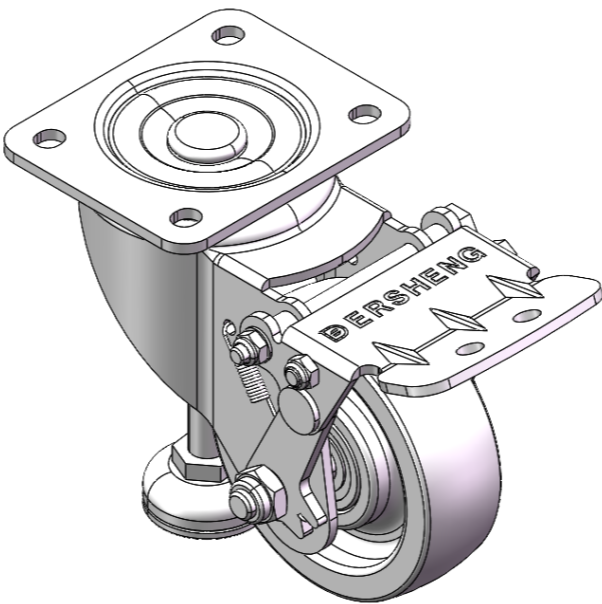
EAN

YJ-11680400072023

Height Adjustable Leveling Caster, Top Plate with Riveted, Fork 44.5 x 30mm (1-3/4" x 1-1/8") Bolt Hole Spacing, Short Pedal Zine-Plated, Mounting Type - Top Plate, Height Adjustable Stand Reinforced Polypropylene and tread Transparent, Bearing with Ball Bearing.

Wheel Tread: Thermoplastic (PA6)
Wheel Center: Thermoplastic (PA6)

Drawings are for reference only and may differ from the product



Picture may differ from original product

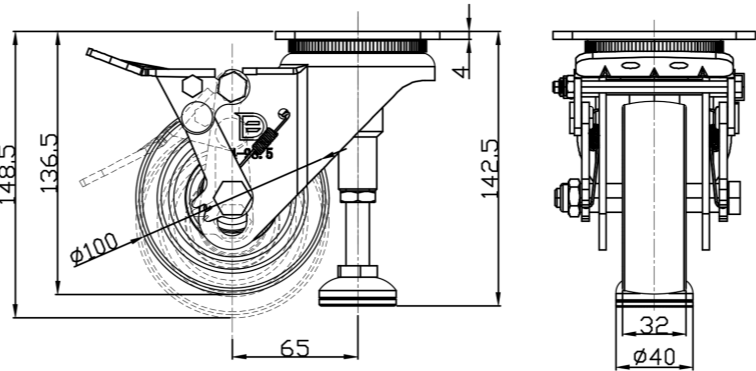
Technical Data

<input checked="" type="radio"/> Imperial <input type="radio"/> Metric	
Wheel Diameter	4 "
Wheel Width	1-5/16 "
Wheel Bearing	Wheels With Ball Bearings
Plate Size	4-3/16 " x 3-7/16 "
Bolt Hole Spacing	3-3/16 " x 2-7/16 "
Plate Hole	3/8 " x 23/64 "
Offset	2-9/16 "
Swivel Interference	10-11/16 "
Overall Height	5-11/16 "
Swivel Radius	5-7/16 "
Hardness Of Tread	75±5° Shore D
Load Capacity (Dynamic)	705lbs
Load Capacity (Static)	2205lbs
Temperature	-4°F to +176°F
Fork Type	Swivel Caster
Stainless	N/A
Electrical Conductivity	N/A
Anti-Static	N/A
Weight	4.5lbs
Standard	ISO22883

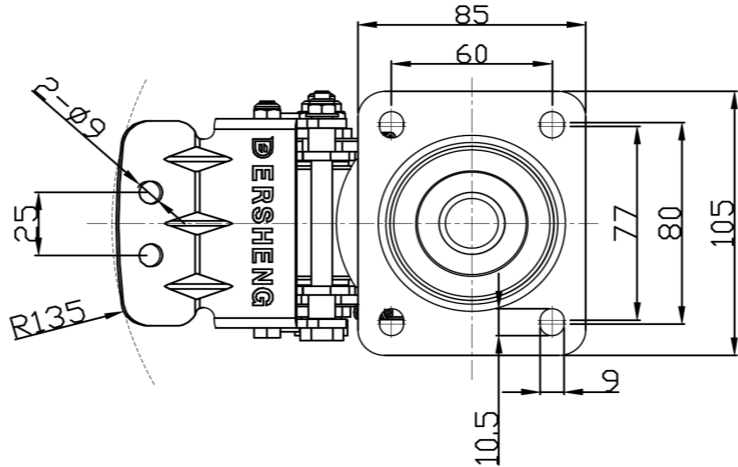
Advantages at a glance

Rolling Resistance	● ● ● ● ●
Operating Noise	● ● ○ ○ ○
Floor Surface Preservation	● ● ○ ○ ○

Dimensions



Mounting



* For any deviation between metric and imperial spec, please refer to the metric spec.