



1168 Levelling Caster Series

AQPU (brown round) Wheel Diameter × Wheel Width 100 x 40mm

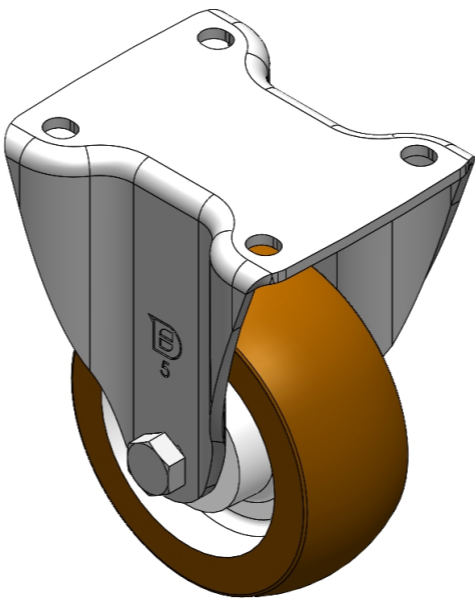
EAN

YJ-11680400601013

Rigid castor, Stamping Fabricated Caster Fork - European standard hole Extended control lever surface, Mounting Type - Top Plate Aluminum Wheel Center, High Quality Polyurethane Wheel Tread Brown, Bearing - Ball Bearing.

Wheel Tread: High quality polyurethane
Wheel Center: Aluminum core

Drawings are for reference only and may differ from the product



Picture may differ from original product

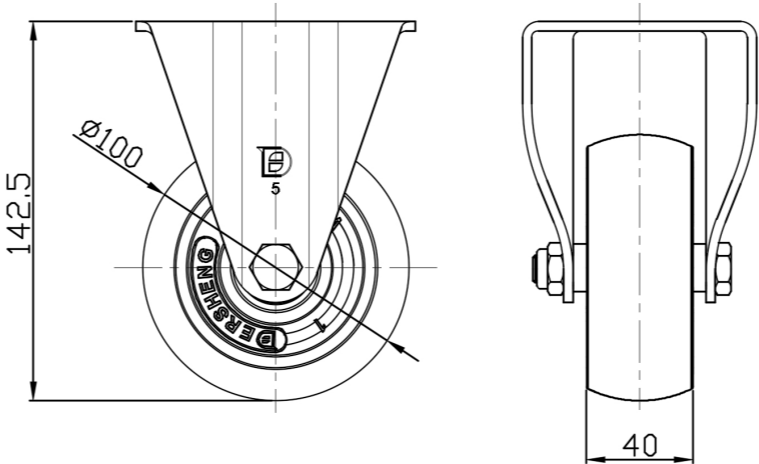
Technical Data

<input checked="" type="radio"/> Metric <input type="radio"/> Imperial	
Wheel Diameter	100mm
Wheel Width	40mm
Wheel Bearing	Wheels With Ball Bearings
Plate Size	105 x 88mm
Bolt Hole Spacing	80 x 60mm
Plate Hole	10.5 x 9mm
Overall Height	142.5mm
Hardness Of Tread	92±5° Shore A
Load Capacity (Dynamic)	320kgs
Load Capacity (Static)	480kgs
Temperature	-20°C to +70°C
Fork Type	Rigid Caster
Stainless	N/A
Electrical Conductivity	N/A
Anti-Static	N/A
Weight	1.06kgs
Standard	ISO22883

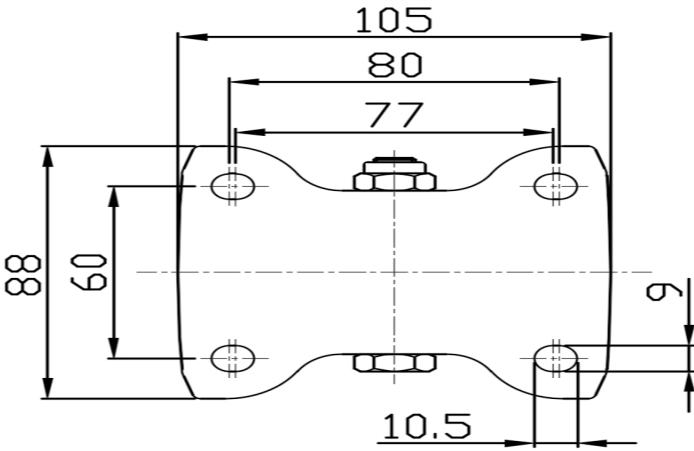
Advantages at a glance

Rolling Resistance	• • • • •
Operating Noise	• • • • •
Floor Surface Preservation	• • • • •

Dimensions



Mounting



* For any deviation between metric and imperial spec, please refer to the metric spec.