



1168 Levelling Caster Series

AQPU (brown round) Wheel Diameter × Wheel Width 100 x 40mm

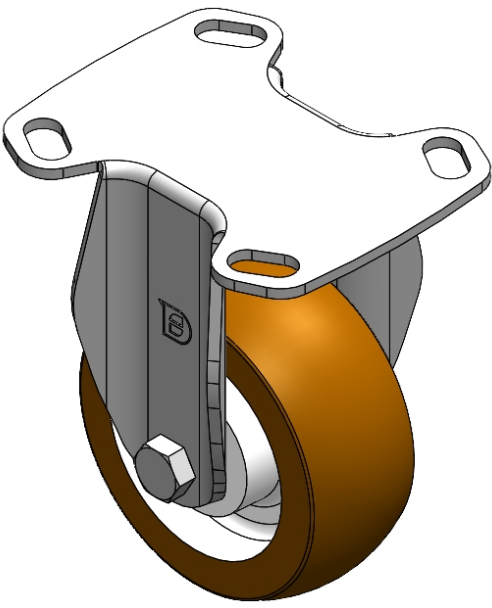
EAN

YJ-11680400601023

Rigid castor, Stamping Fabricated Caster Fork - D-type hole Extended control lever surface, Mounting Type - Top Plate Aluminum Wheel Center, High Quality Polyurethane Wheel Tread Brown, Bearing - Ball Bearing.

Wheel Tread: High quality polyurethane  
Wheel Center: Aluminum core

Drawings are for reference only and may differ from the product



Picture may differ from original product

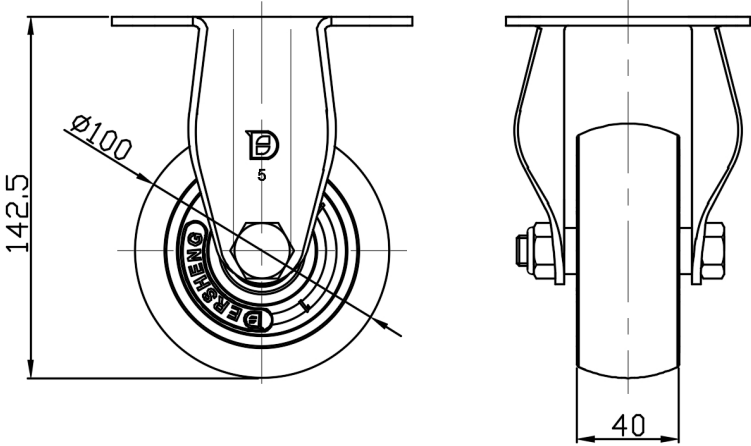
Technical Data

<input checked="" type="radio"/> Imperial <input type="radio"/> Metric	
Wheel Diameter	4 "
Wheel Width	1-5/8 "
Wheel Bearing	Wheels With Ball Bearings
Plate Size	4-11/16 " x 3-13/16 "
Bolt Hole Spacing	3-3/8 " x 2-3/4 "
Plate Hole	13/16 " x 3/8 "
Overall Height	5-11/16 "
Hardness Of Tread	92±5° Shore A
Load Capacity (Dynamic)	705lbs
Load Capacity (Static)	1058lbs
Temperature	-4°F to +158°F
Fork Type	Rigid Caster
Stainless	N/A
Electrical Conductivity	N/A
Anti-Static	N/A
Weight	2.2lbs
Standard	ISO22883

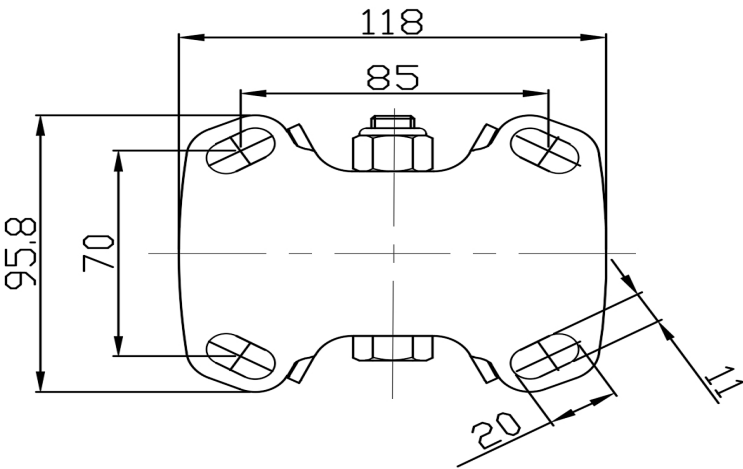
Advantages at a glance

Rolling Resistance	● ● ● ● ●
Operating Noise	● ● ● ● ●
Floor Surface Preservation	● ● ● ● ●

Dimensions



Mounting



\* For any deviation between metric and imperial spec, please refer to the metric spec.