



1169- Height Adjustment Caster

PA wheel (Black) Wheel Diameter × Wheel Width 40 x 20mm

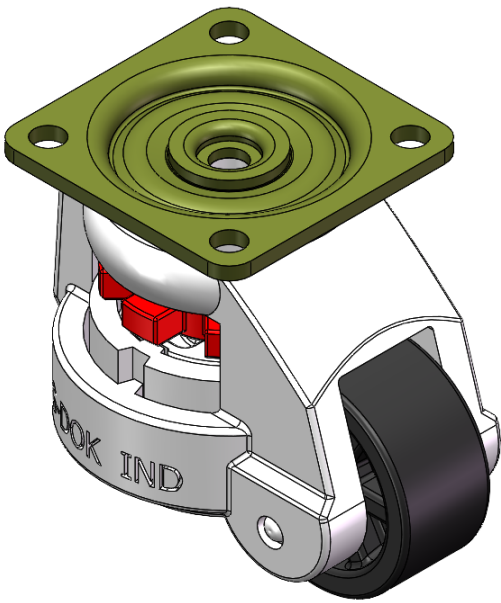
EAN

YJ-11690150072011

Adjustable Caster with Riveted die-cast Top Plate and integrated Fork - 42 x 42" Bolt Hole Spacing  
Gray-painted finish, Top Plate (3T) Mounting Type mechanism, adjustable Fork  
Reinforced Polypropylene Wheel Center and Wheel Tread  
Black, Bearing - Ball Bearings.

Wheel tread:Thermoplastic  
Wheel Center:Thermoplastic

Drawings are for reference only and may differ from the product



Picture may differ from original product

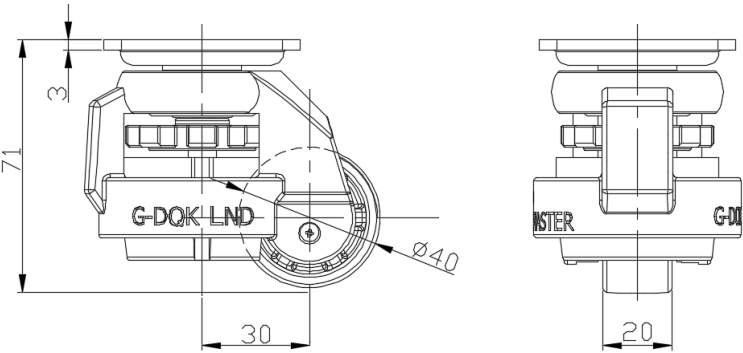
Technical Data

<input checked="" type="radio"/> Metric <input type="radio"/> Imperial	
Wheel Diameter	40mm
Wheel Width	20mm
Wheel Bearing	Wheels With Ball Bearings
Plate Size	55 x 55mm
Bolt Hole Spacing	42 x 42mm
Plate Hole	6.5mm
Offset	30mm
Swivel Interference	102mm
Overall Height	71mm
Swivel Radius	51mm
Hardness Of Tread	75±5° Shore D
Load Capacity (Dynamic)	50kgs
Load Capacity (Static)	75kgs
Temperature	-20°C to +80°C
Fork Type	Swivel Caster
Stainless	N/A
Electrical Conductivity	N/A
Anti-Static	N/A
Weight	0.37kgs
Standard	ISO22883

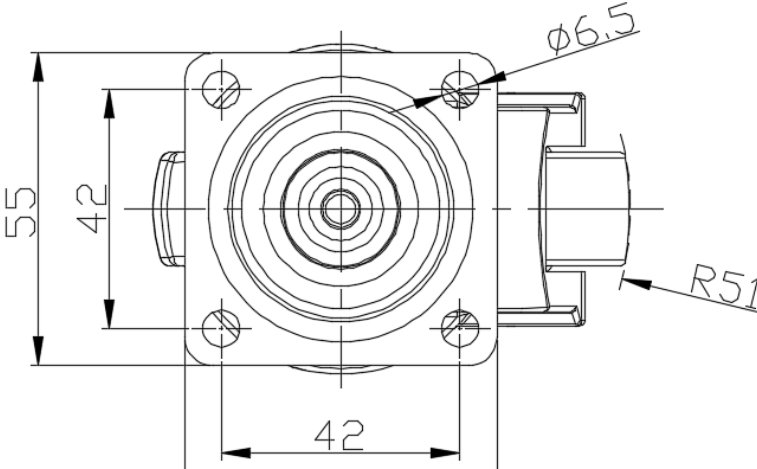
Advantages at a glance

Rolling Resistance	● ● ● ● ●
Operating Noise	● ● ○ ○ ○
Floor Surface Preservation	● ● ○ ○ ○

Dimensions



Mounting



Drawings are for reference only and may differ from the product.

\* For any deviation between metric and imperial spec, please refer to the metric spec.