



1169- Height Adjustment Caster

PA wheel (Black) Wheel Diameter × Wheel Width 40 x 20mm

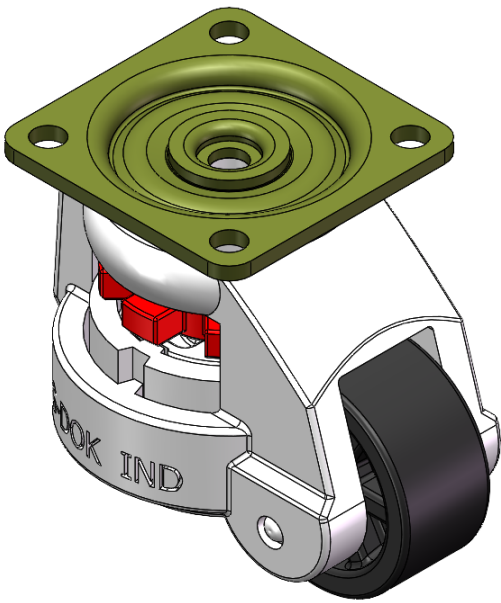
EAN

YJ-11690150072011

Adjustable Caster with Riveted die-cast Top Plate and integrated Fork - 42 x 42" Bolt Hole Spacing
Gray-painted finish, Top Plate (3T) Mounting Type mechanism, adjustable Fork
Reinforced Polypropylene Wheel Center and Wheel Tread
Black, Bearing - Ball Bearings.

Wheel tread:Thermoplastic
Wheel Center:Thermoplastic

Drawings are for reference only and may differ from the product



Picture may differ from original product

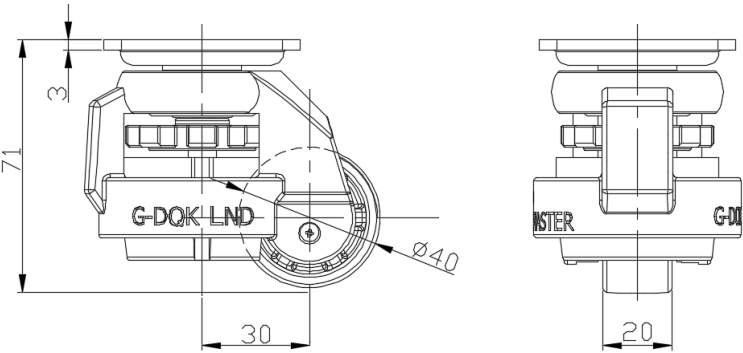
Technical Data

<input checked="" type="radio"/> Imperial <input type="radio"/> Metric	
Wheel Diameter	1-5/8
Wheel Width	13/16 "
Wheel Bearing	Wheels With Ball Bearings
Plate Size	2-3/16 " x 2-3/16 "
Bolt Hole Spacing	1-11/16 " x 1-11/16 "
Plate Hole	1/4 "
Offset	1-3/16 "
Swivel Interference	4-1/16 "
Overall Height	2-13/16 "
Swivel Radius	1-15/16 "
Hardness Of Tread	75±5° Shore D
Load Capacity (Dynamic)	110lbs
Load Capacity (Static)	165lbs
Temperature	-4°F to +176°F
Fork Type	Swivel Caster
Stainless	N/A
Electrical Conductivity	N/A
Anti-Static	N/A
Weight	0.8lbs
Standard	ISO22883

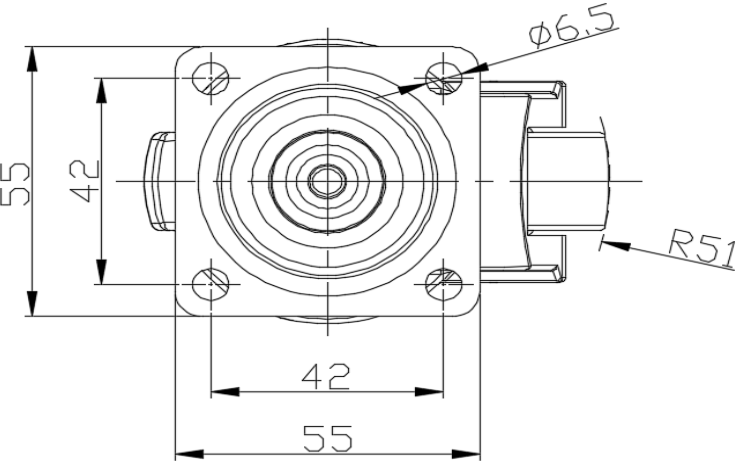
Advantages at a glance

Rolling Resistance	● ● ● ● ●
Operating Noise	● ● ○ ○ ○
Floor Surface Preservation	● ● ○ ○ ○

Dimensions



Mounting



* For any deviation between metric and imperial spec, please refer to the metric spec.