



1169- Height Adjustment Caster

PA wheel (Black) Wheel Diameter × Wheel Width 61 x 28mm

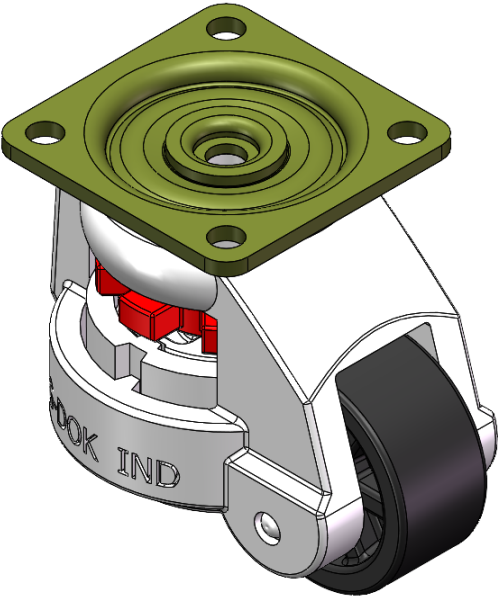
EAN

YJ-11690250072011

Adjustable Caster with movable support, die-cast Fork with Riveted Fork - 70 x 70 Bolt Hole Spacing
Gray paint finish, Top Plateed (5T) Mounting Type mechanism with adjustable support Fork
Reinforced Polypropylene Wheel Center and Wheel Tread
Black, Bearing - Ball Bearings.

Wheel tread:Thermoplastic
Wheel Center:Thermoplastic

Drawings are for reference only and may differ from the product



Picture may differ from original product

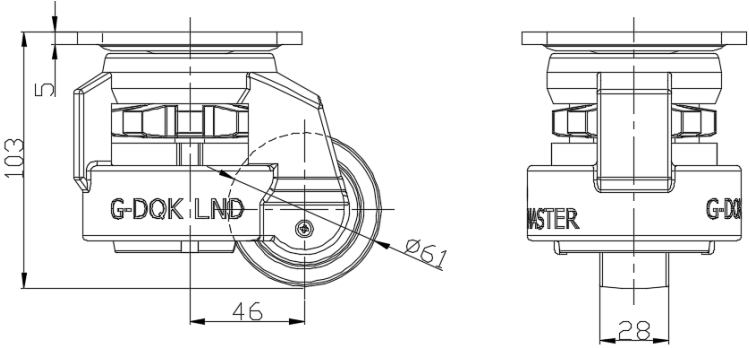
Technical Data

<input checked="" type="radio"/> Metric <input type="radio"/> Imperial	
Wheel Diameter	61mm
Wheel Width	28mm
Wheel Bearing	Wheels With Ball Bearings
Plate Size	90 x 90mm
Bolt Hole Spacing	70 x 70mm
Plate Hole	9mm
Offset	46mm
Swivel Interference	155mm
Overall Height	103mm
Swivel Radius	77.5mm
Hardness Of Tread	75±5° Shore D
Load Capacity (Dynamic)	500kgs
Load Capacity (Static)	750kgs
Temperature	-20°C to +80°C
Fork Type	Swivel Caster
Stainless	N/A
Electrical Conductivity	N/A
Anti-Static	N/A
Weight	1.2kgs
Standard	ISO22883

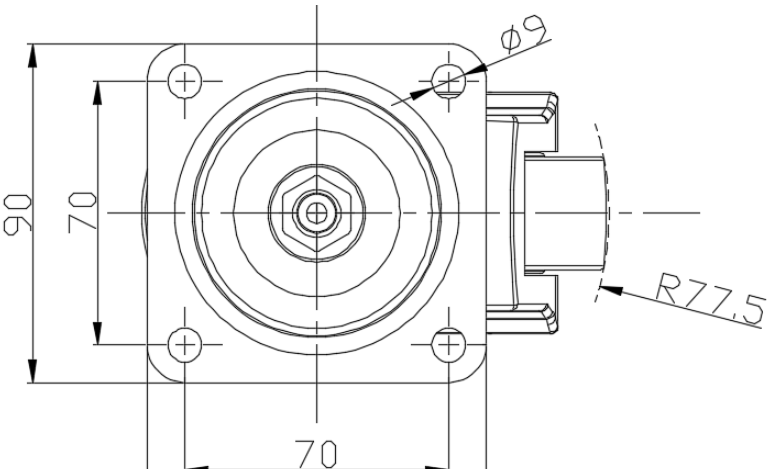
Advantages at a glance

Rolling Resistance	● ● ● ● ●
Operating Noise	● ● ○ ○ ○
Floor Surface Preservation	● ● ○ ○ ○

Dimensions



Mounting



Drawings are for reference only and may differ from the product.

* For any deviation between metric and imperial spec, please refer to the metric spec.