



1169- Height Adjustment Caster

PA wheel (Black) Wheel Diameter × Wheel Width 61 x 28mm

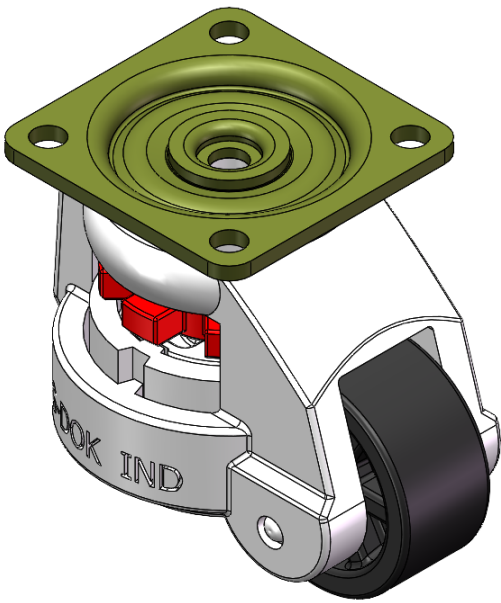
EAN

YJ-11690250072011

Adjustable Caster with movable support, die-cast Fork with Riveted Fork - 70 x 70 Bolt Hole Spacing
Gray paint finish, Top Plateed (5T) Mounting Type mechanism with adjustable support Fork
Reinforced Polypropylene Wheel Center and Wheel Tread
Black, Bearing - Ball Bearings.

Wheel tread:Thermoplastic
Wheel Center:Thermoplastic

Drawings are for reference only and may differ from the product



Picture may differ from original product

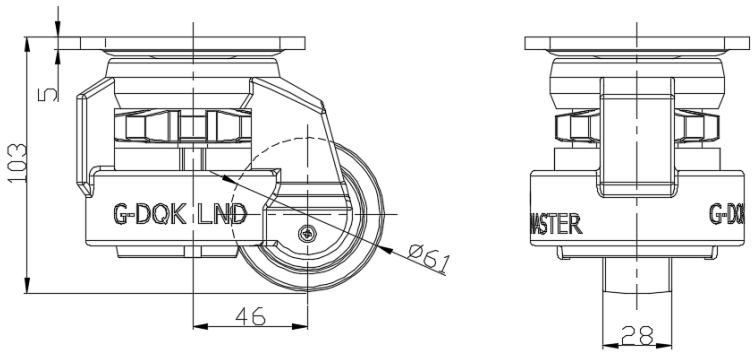
Technical Data

<input checked="" type="radio"/> Imperial <input type="radio"/> Metric	
Wheel Diameter	2-7/16 "
Wheel Width	1-1/8 "
Wheel Bearing	Wheels With Ball Bearings
Plate Size	3-9/16 " x 3-9/16 "
Bolt Hole Spacing	2-3/4 " x 2-3/4 "
Plate Hole	23/64 "
Offset	1-7/8 "
Swivel Interference	6-1/8 "
Overall Height	4-1/16 "
Swivel Radius	3-1/16 "
Hardness Of Tread	75±5° Shore D
Load Capacity (Dynamic)	1102lbs
Load Capacity (Static)	1653lbs
Temperature	-4°F to +176°F
Fork Type	Swivel Caster
Stainless	N/A
Electrical Conductivity	N/A
Anti-Static	N/A
Weight	2.6lbs
Standard	ISO22883

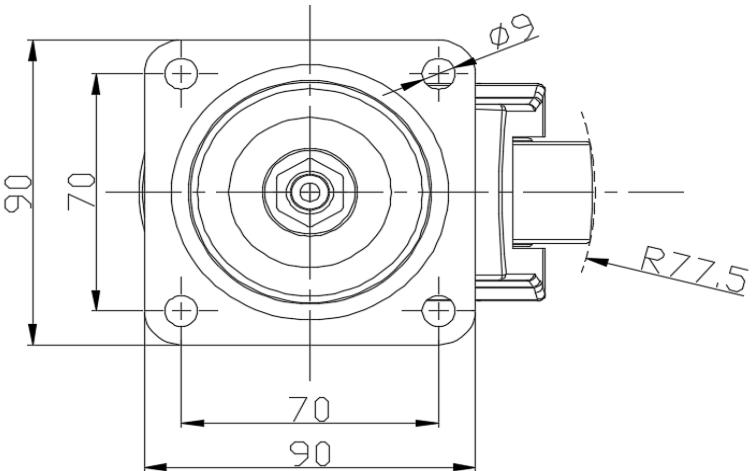
Advantages at a glance

Rolling Resistance	● ● ● ● ●
Operating Noise	● ● ○ ○ ○
Floor Surface Preservation	● ● ○ ○ ○

Dimensions



Mounting



* For any deviation between metric and imperial spec, please refer to the metric spec.