

PU Series



Wheel Diameter × Wheel Width 85 x 90mm

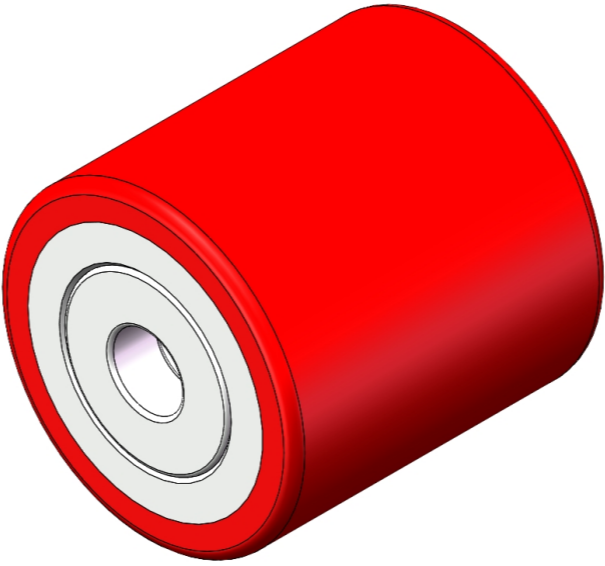
EAN

YJ-12033303353371

Provides excellent Floor Surface Preservation and wear resistance, with Low Noise Operation.
Has excellent Hydrolysis Resistance.
Suitable for tropical regions and humid working environments.
PU Red

Wheel Tread: cast iron core
Wheel Center: High-quality polyurethane
Bearing: ball bearing

Drawings are for reference only and may differ from the product



Picture may differ from original product

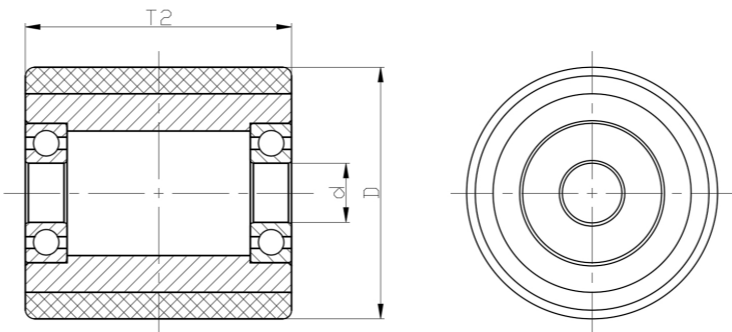
Technical Data

<input checked="" type="radio"/> Metric <input type="radio"/> Imperial	
Wheel Diameter(D)	85mm
Wheel Width(T2)	90mm
Wheel Bearing	Ball Bearing
Axle Bore(d)	20mm
Axle Bore(S)	
Bearing Bore Depth(t)	
Hardness Of Tread	92±5° Shore A
Load Capacity (Dynamic)	680kgs
Load Capacity (Static)	1020kgs
Temperature	-20°C to +70°C
Electrical Conductivity	N/A
Anti-Static	N/A
Weight	1.94kgs
Standard	ISO22883

Advantages at a glance

Rolling Resistance	● ● ● ○ ○
Operating Noise	● ● ● ● ○
Floor Surface Preservation	● ● ● ● ○

2D Dimensional Drawing of Single Wheel



* For any deviation between metric and imperial spec, please refer to the metric spec.