

PU Series



Wheel Diameter × Wheel Width 125 x 45mm

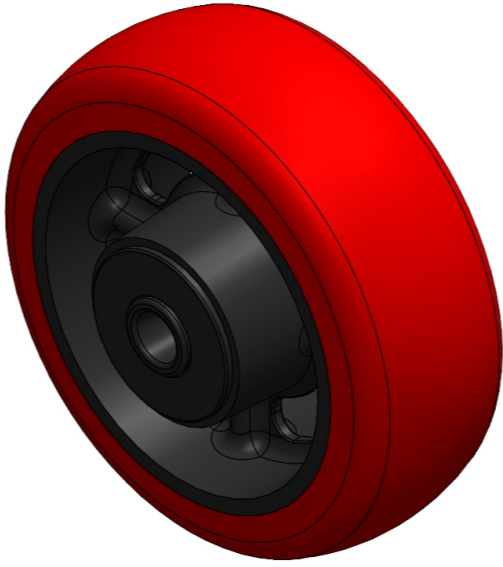
EAN

YJ-12033305186171

Excellent Floor Surface Preservation and wear resistance, low noise.
Excellent Hydrolysis Resistance.
Suitable for tropical regions and humid working environments.
PU Red, Curved Wheel Surface

Wheel Center: cast iron core
Wheel Tread: High-quality polyurethane
Bearing: Ball bearing

Drawings are for reference only and may differ from the product



Picture may differ from original product

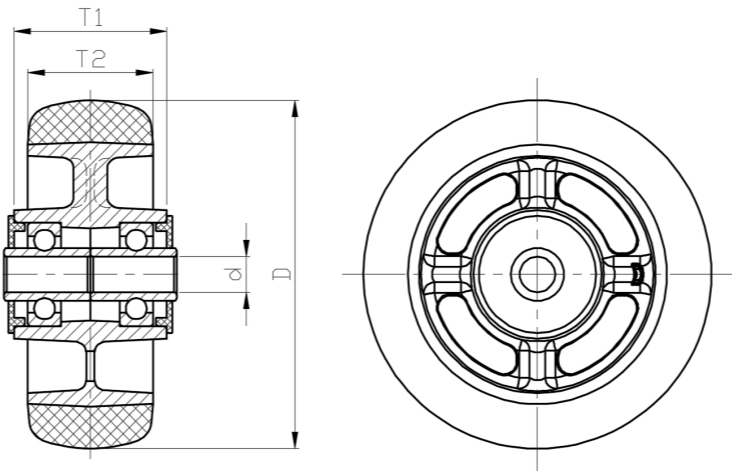
Technical Data

<input checked="" type="radio"/> Metric <input type="radio"/> Imperial	
Wheel Diameter(D)	125mm
Wheel Width(T2)	45mm
Wheel Bearing	Ball Bearing
Axle Bore(d)	12.7mm
Axle Bore(S)	—
Bearing Bore Depth(t)	—
Hub Lenth(T1)	62mm
Hardness Of Tread	92±5° Shore A
Load Capacity (Dynamic)	470kgs
Load Capacity (Static)	705kgs
Temperature	-20°C to +70°C
Electrical Conductivity	N/A
Anti-Static	N/A
Weight	1.34kgs
Standard	ISO22883

Advantages at a glance

Rolling Resistance	● ● ● ○ ○
Operating Noise	● ● ● ● ○
Floor Surface Preservation	● ● ● ● ○

2D Dimensional Drawing of Single Wheel



* For any deviation between metric and imperial spec, please refer to the metric spec.