

QPU Series



Wheel Diameter × Wheel Width 75 x 30mm

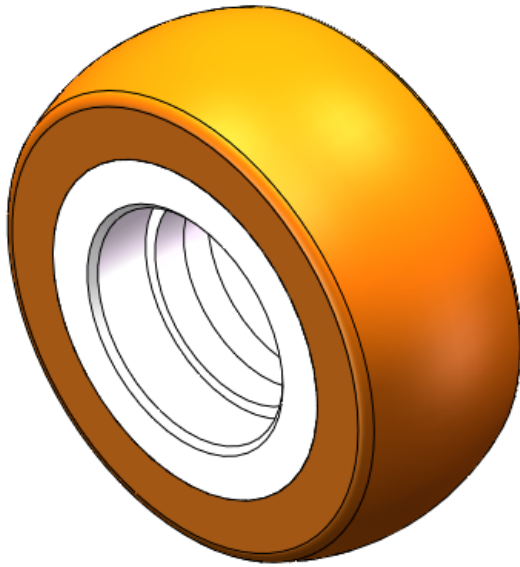
EAN

YJ-12035303136601

It has good elasticity, reduces pushing resistance, improves machine controllability, and has good wear resistance.  
It has excellent Hydrolysis Resistance.  
Suitable for tropical regions and humid working environments.  
QPU, brown, Wheel Tread profile: Crown.

Wheel Tread: casting  
Wheel Center: High-quality polyurethane  
Bearings: —

Drawings are for reference only and may differ from the product



Picture may differ from original product

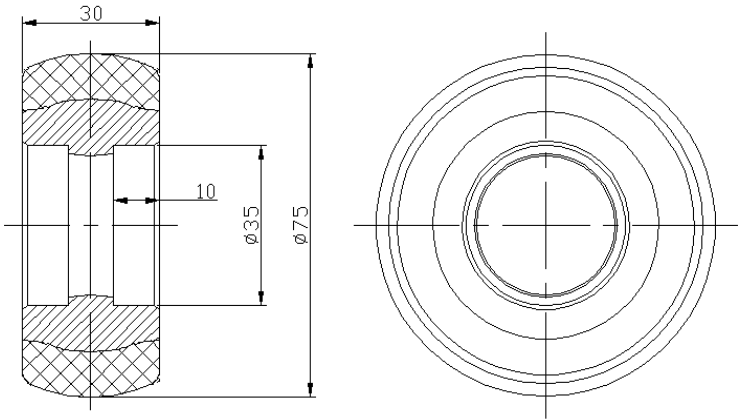
Technical Data

<input checked="" type="radio"/> Imperial <input type="radio"/> Metric	
Wheel Diameter(D)	3 "
Wheel Width(T2)	1-3/16 "
Wheel Bearing	Without Bearing
Axle Bore(d)	—
Axle Bore(S)	1-3/8 "
Bearing Bore Depth(t)	3/8 "
Hub Lenth(T1)	1-3/16 "
Hardness Of Tread	92±5° Shore A
Load Capacity (Dynamic)	446lbs
Load Capacity (Static)	670lbs
Temperature	-4°F to +158°F
Electrical Conductivity	N/A
Anti-Static	N/A
Weight	0.8lbs
Standard	ISO22883

Advantages at a glance

Rolling Resistance	● ● ● ● ●
Operating Noise	● ● ● ● ●
Floor Surface Preservation	● ● ● ● ●

2D Dimensional Drawing of Single Wheel



\* For any deviation between metric and imperial spec, please refer to the metric spec.