

QPU Series



Wheel Diameter × Wheel Width 80 x 35mm

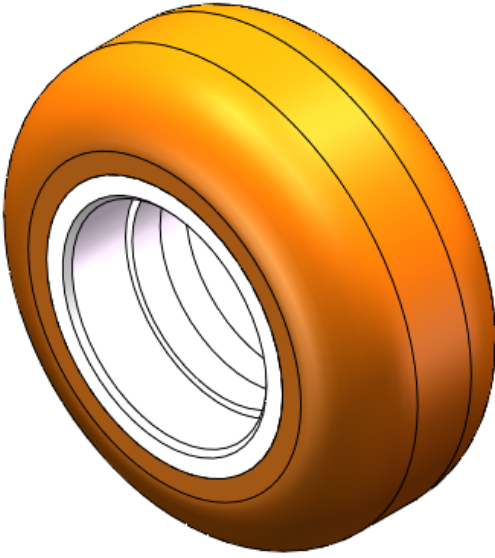
EAN

YJ-12035303156101

Good elasticity, reduces pushing resistance, improves machine controllability, and has good wear resistance.  
Excellent Hydrolysis Resistance.  
Suitable for tropical regions and humid working environments.  
QPU, brown, Wheel Tread profile: Crown.

Wheel Tread: casting  
Wheel Center: High-quality polyurethane  
Bearings: —

Drawings are for reference only and may differ from the product



Picture may differ from original product

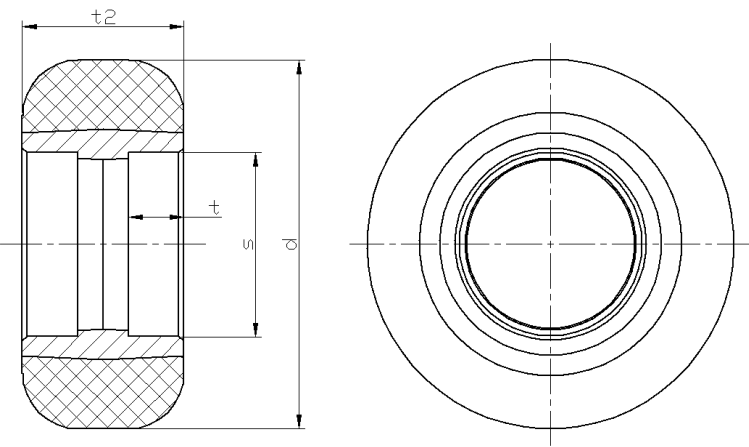
Technical Data

<input checked="" type="radio"/> Imperial <input type="radio"/> Metric	
Wheel Diameter(D)	3-3/16 "
Wheel Width(T2)	1-7/16 "
Wheel Bearing	Without Bearing
Axle Bore(d)	—
Axle Bore(S)	1-5/8 "
Bearing Bore Depth(t)	1/2 "
Hub Lenth(T1)	1-3/8 "
Hardness Of Tread	92±5° Shore A
Load Capacity (Dynamic)	347lbs
Load Capacity (Static)	521lbs
Temperature	-4°F to +158°F
Electrical Conductivity	N/A
Anti-Static	N/A
Weight	0.6lbs
Standard	ISO22883

Advantages at a glance

Rolling Resistance	● ● ● ● ●
Operating Noise	● ● ● ● ●
Floor Surface Preservation	● ● ● ● ●

2D Dimensional Drawing of Single Wheel



\* For any deviation between metric and imperial spec, please refer to the metric spec.