

QPU Series



Wheel Diameter × Wheel Width 75 x 40mm

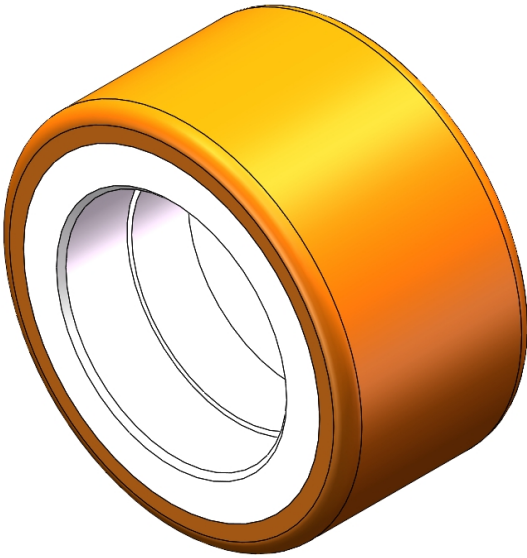
EAN

YJ-12035303180303

It has good elasticity, reduces pushing resistance, improves machine controllability, and has good wear resistance.  
It has excellent Hydrolysis Resistance.  
Suitable for tropical regions and humid working environments.  
QPU Brown

Wheel Center: Iron core  
Wheel Tread: High-quality polyurethane  
Bearings: —

Drawings are for reference only and may differ from the product



Picture may differ from original product

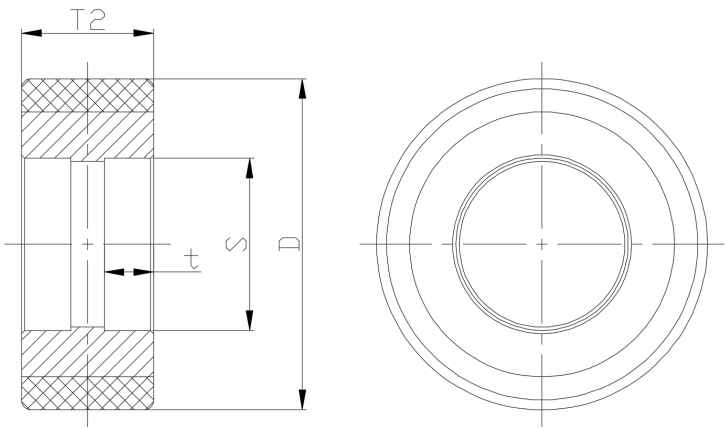
Technical Data

<input checked="" type="radio"/> Metric <input type="radio"/> Imperial	
Wheel Diameter(D)	75mm
Wheel Width(T2)	40mm
Wheel Bearing	Without Bearing
Axle Bore(d)	—
Axle Bore(S)	47mm
Bearing Bore Depth(t)	14mm
Hardness Of Tread	92±5° Shore A
Load Capacity (Dynamic)	375kgs
Load Capacity (Static)	562.5kgs
Temperature	-20°C to +70°C
Electrical Conductivity	N/A
Anti-Static	N/A
Weight	0.50kgs
Standard	ISO22883

Advantages at a glance

Rolling Resistance	● ● ● ● ●
Operating Noise	● ● ● ● ●
Floor Surface Preservation	● ● ● ● ●

2D Dimensional Drawing of Single Wheel



\* For any deviation between metric and imperial spec, please refer to the metric spec.