

QPU Series



Wheel Diameter × Wheel Width 75 x 45mm

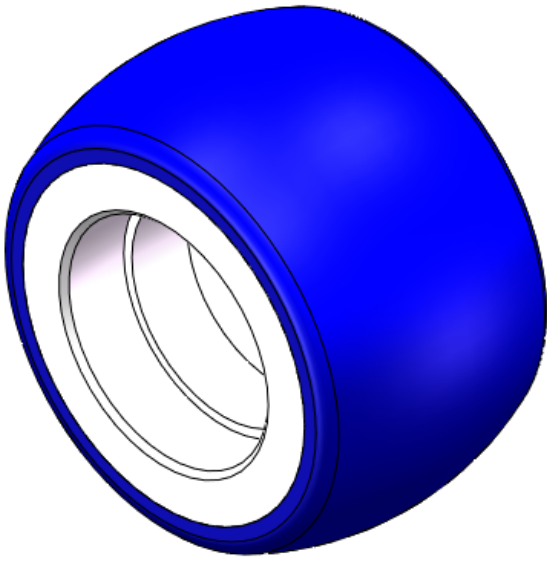
EAN

YJ-12035303186201

It has good elasticity, reduces pushing resistance, improves machine tool operability, and has good wear resistance.
It has excellent Hydrolysis Resistance.
Suitable for tropical regions and humid working environments.
QPU Blue, Curved Wheel Surface

Wheel Tread: casting
Wheel Center: High-quality polyurethane
Bearings: —

Drawings are for reference only and may differ from the product



Picture may differ from original product

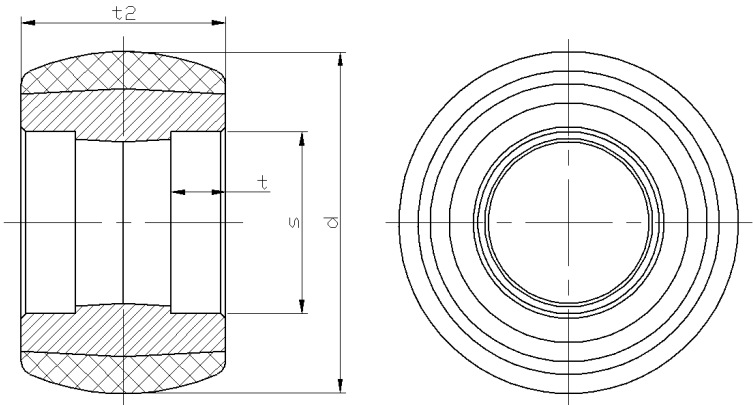
Technical Data

<input checked="" type="radio"/> Metric <input type="radio"/> Imperial	
Wheel Diameter(D)	75mm
Wheel Width(T2)	45mm
Wheel Bearing	Without Bearing
Axle Bore(d)	—
Axle Bore(S)	40mm
Bearing Bore Depth(t)	12mm
Hub Lenth(T1)	45mm
Hardness Of Tread	87±5° Shore A
Load Capacity (Dynamic)	192kgs
Load Capacity (Static)	288.5kgs
Temperature	-20°C to +70°C
Electrical Conductivity	N/A
Anti-Static	N/A
Weight	0.53kgs
Standard	ISO22883

Advantages at a glance

Rolling Resistance	● ● ● ● ●
Operating Noise	● ● ● ● ●
Floor Surface Preservation	● ● ● ● ●

2D Dimensional Drawing of Single Wheel



* For any deviation between metric and imperial spec, please refer to the metric spec.