

QPU Series



Wheel Diameter × Wheel Width 75 x 45mm

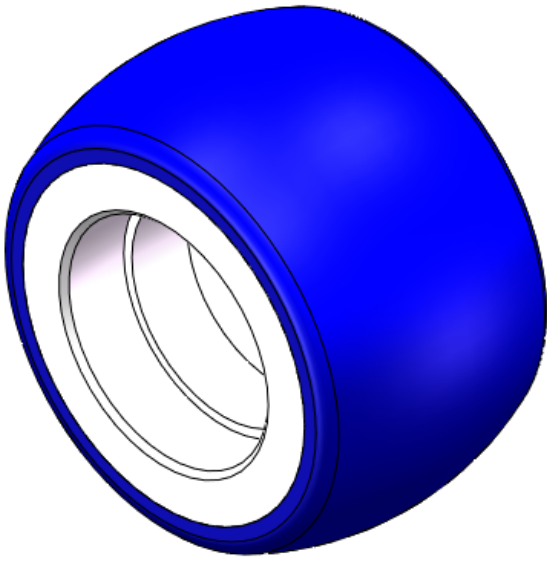
EAN

YJ-12035303186201

It has good elasticity, reduces pushing resistance, improves machine tool operability, and has good wear resistance.  
It has excellent Hydrolysis Resistance.  
Suitable for tropical regions and humid working environments.  
QPU Blue, Curved Wheel Surface

Wheel Tread: casting  
Wheel Center: High-quality polyurethane  
Bearings: —

Drawings are for reference only and may differ from the product



Picture may differ from original product

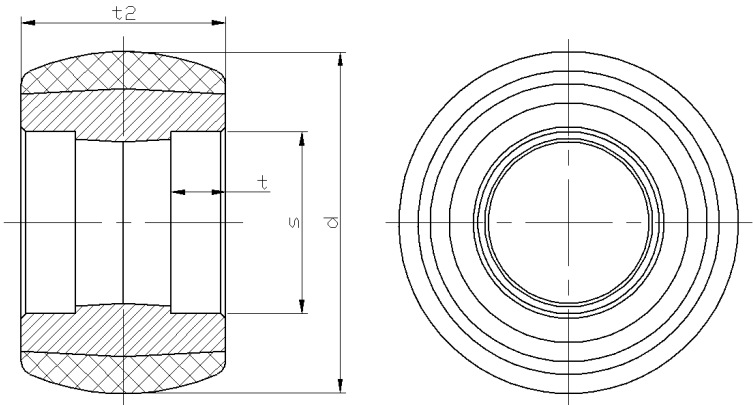
Technical Data

|  |                 |
|--|-----------------|
| <input checked="" type="radio"/> Imperial <input type="radio"/> Metric |                 |
| Wheel Diameter(D)  | 3 "             |
| Wheel Width(T2)  | 1-13/16 "       |
| Wheel Bearing  | Without Bearing |
| Axle Bore(d)   | —               |
| Axle Bore(S)   | 3/8 "           |
| Bearing Bore Depth(t)  | 1/2 "           |
| Hub Lenth(T1)  | 1-13/16 "       |
| Hardness Of Tread  | 87±5° Shore A   |
| Load Capacity (Dynamic)  | 423lbs          |
| Load Capacity (Static)   | 636lbs          |
| Temperature  | -4°F to +158°F  |
| Electrical Conductivity  | N/A             |
| Anti-Static  | N/A             |
| Weight   | 1.2lbs          |
| Standard   | ISO22883        |

Advantages at a glance

|                            |           |
|----------------------------|-----------|
| Rolling Resistance         | ● ● ● ● ● |
| Operating Noise            | ● ● ● ● ● |
| Floor Surface Preservation | ● ● ● ● ● |

2D Dimensional Drawing of Single Wheel



\* For any deviation between metric and imperial spec, please refer to the metric spec.