

QPU Series



Wheel Diameter × Wheel Width 100 x 45mm

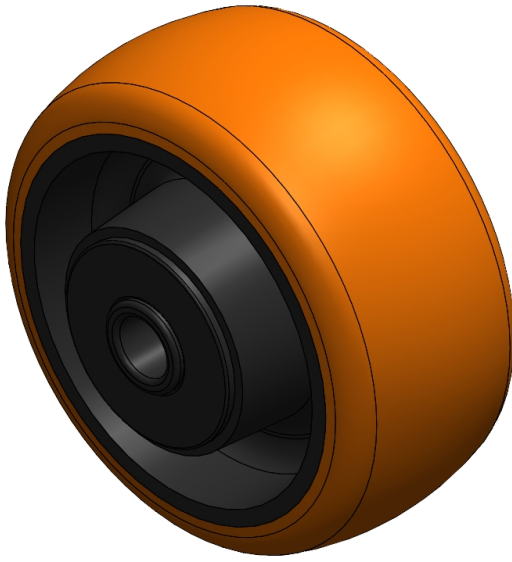
EAN

YJ-12035304186171

Good elasticity, reduces pushing resistance, improves machine controllability, and has good wear resistance.  
Excellent Hydrolysis Resistance.  
Suitable for tropical regions and humid working environments.  
QPU brown Wheel Tread with arc shape.

Wheel Center: cast iron core  
Wheel Tread: High-quality polyurethane  
Bearing: Ball bearing

Drawings are for reference only and may differ from the product



Picture may differ from original product

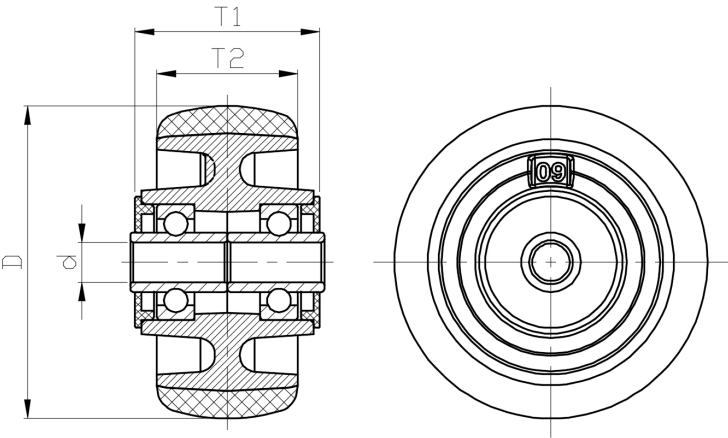
Technical Data

<input checked="" type="radio"/> Metric <input type="radio"/> Imperial	
Wheel Diameter(D)	100mm
Wheel Width(T2)	45mm
Wheel Bearing	Ball Bearing
Axle Bore(d)	12.7mm
Axle Bore(S)	—
Bearing Bore Depth(t)	—
Hub Lenth(T1)	62mm
Hardness Of Tread	92±5° Shore A
Load Capacity (Dynamic)	400kgs
Load Capacity (Static)	600kgs
Temperature	-20°C to +70°C
Electrical Conductivity	N/A
Anti-Static	N/A
Weight	1.22kgs
Standard	ISO22883

Advantages at a glance

Rolling Resistance	• • • • •
Operating Noise	• • • • •
Floor Surface Preservation	• • • • •

2D Dimensional Drawing of Single Wheel



\* For any deviation between metric and imperial spec, please refer to the metric spec.