

QPU Series



Wheel Diameter ×Wheel Width 100× 30mm

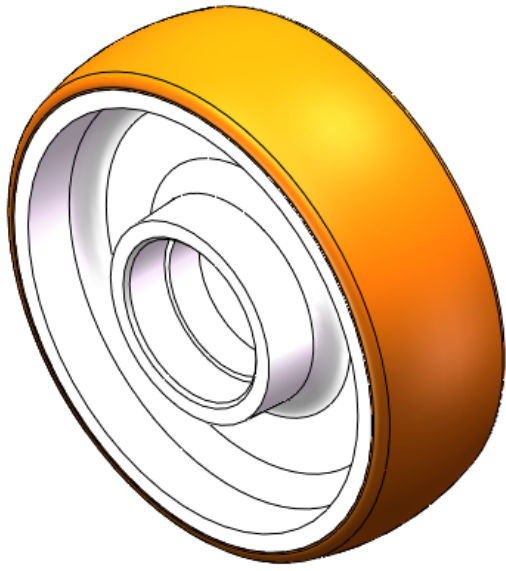
EAN

YJ-12035305156701

Good elasticity, reduces pushing resistance, improves machine controllability, and has good wear resistance.  
Excellent Hydrolysis Resistance.  
Suitable for tropical regions and humid working environments.  
QPU brown Wheel Tread with arc shape.

Wheel Center: cast iron core  
Wheel Tread: High-quality polyurethane  
Bearings: —

Drawings are for reference only and may differ from the product



Picture may differ from original product

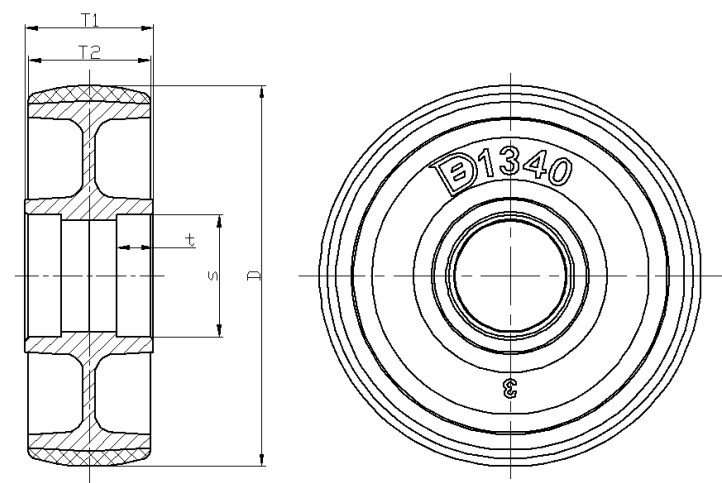
Technical Data

<input checked="" type="radio"/> Imperial <input type="radio"/> Metric	
Wheel Diameter(D)	5 "
Wheel Width(T2)	1-5/8 "
Wheel Bearing	Without Bearing
Axle Bore(d)	—
Axle Bore(S)	1-5/8 "
Bearing Bore Depth(t)	1/2 "
Hub Lenth(T1)	1-11/16 "
Hardness Of Tread	92±5° Shore A
Load Capacity (Dynamic)	1102lbs
Load Capacity (Static)	1653lbs
Temperature	-4°F to +158°F
Electrical Conductivity	N/A
Anti-Static	N/A
Weight	2.4lbs
Standard	ISO22883

Advantages at a glance

Rolling Resistance	● ● ● ● ●
Operating Noise	● ● ● ● ●
Floor Surface Preservation	● ● ● ● ●

2D Dimensional Drawing of Single Wheel



\* For any deviation between metric and imperial spec, please refer to the metric spec.