

QPU Series



Wheel Diameter × Wheel Width 85 x 90mm

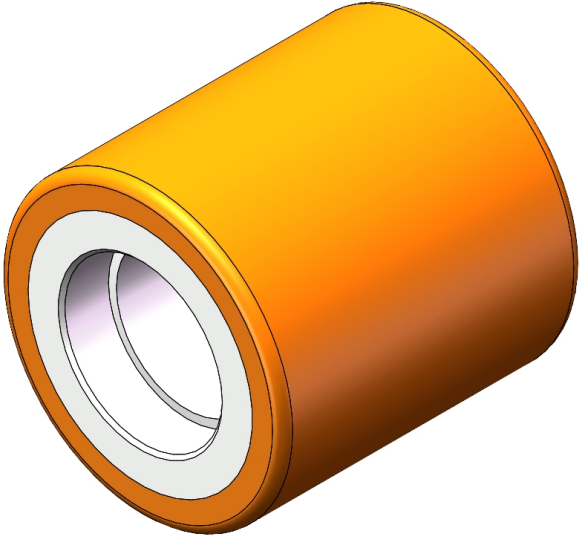
EAN

YJ-12035353386100

Excellent elasticity, reduced push resistance, improved machine controllability, and Excellent Wear Resistant.  
Excellent Hydrolysis Resistance.  
Suitable for tropical regions and humid working environments.  
QPU Brown

Wheel Tread: cast iron core  
Wheel Center: High-quality polyurethane  
Bearing: —

Drawings are for reference only and may differ from the product



Picture may differ from original product

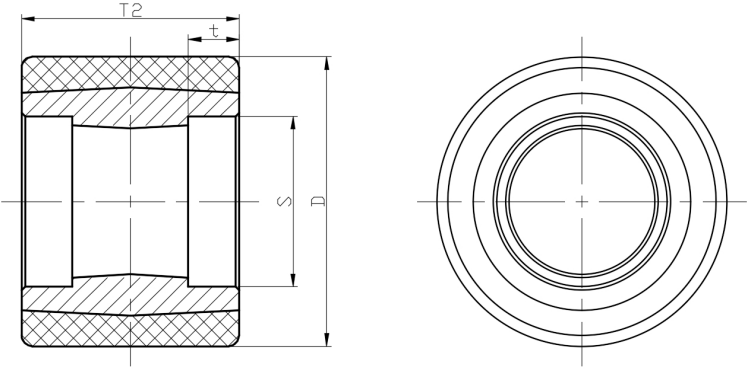
Technical Data

<input checked="" type="radio"/> Metric <input type="radio"/> Imperial	
Wheel Diameter(D)	85mm
Wheel Width(T2)	90mm
Wheel Bearing	Without Bearing
Axle Bore(d)	
Axle Bore(S)	47mm
Bearing Bore Depth(t)	14mm
Hardness Of Tread	92±5° Shore A
Load Capacity (Dynamic)	680kgs
Load Capacity (Static)	1020kgs
Temperature	-20°C to +70°C
Electrical Conductivity	N/A
Anti-Static	N/A
Weight	1.73kgs
Standard	ISO22883

Advantages at a glance

Rolling Resistance	● ● ● ● ●
Operating Noise	● ● ● ● ●
Floor Surface Preservation	● ● ● ● ●

2D Dimensional Drawing of Single Wheel



\* For any deviation between metric and imperial spec, please refer to the metric spec.