

QPU Series



Wheel Diameter × Wheel Width 85 x 90mm

EAN

YJ-12035353386100

Excellent elasticity, reduced push resistance, improved machine controllability, and Excellent Wear Resistant.  
Excellent Hydrolysis Resistance.  
Suitable for tropical regions and humid working environments.  
QPU Brown

Wheel Tread: cast iron core  
Wheel Center: High-quality polyurethane  
Bearing: —

Drawings are for reference only and may differ from the product



Picture may differ from original product

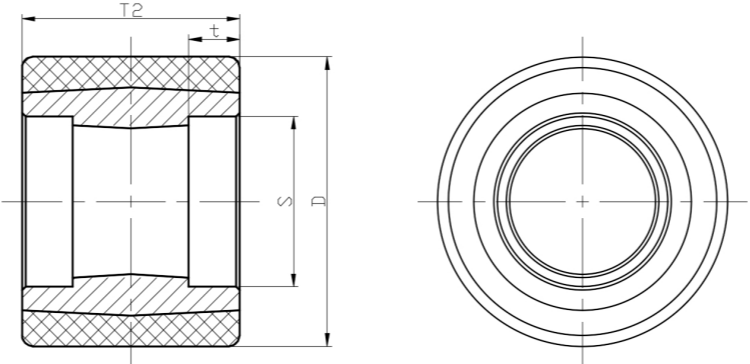
Technical Data

<input checked="" type="radio"/> Imperial <input type="radio"/> Metric	
Wheel Diameter(D)	3-7/16 "
Wheel Width(T2)	3-9/16 "
Wheel Bearing	Without Bearing
Axle Bore(d)	
Axle Bore(S)	1-7/8 "
Bearing Bore Depth(t)	9/16 "
Hardness Of Tread	92±5° Shore A
Load Capacity (Dynamic)	1499lbs
Load Capacity (Static)	2249lbs
Temperature	-4°F to +158°F
Electrical Conductivity	N/A
Anti-Static	N/A
Weight	3.8lbs
Standard	ISO22883

Advantages at a glance

Rolling Resistance	● ● ● ● ●
Operating Noise	● ● ● ● ●
Floor Surface Preservation	● ● ● ● ●

2D Dimensional Drawing of Single Wheel



\* For any deviation between metric and imperial spec, please refer to the metric spec.