

APU Series



Wheel Diameter × Wheel Width 75 x 29mm

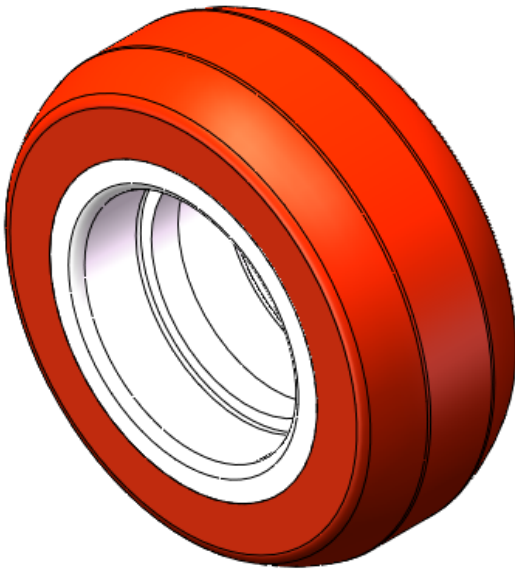
EAN

YJ-12035903130100

Excellent Floor Surface Preservation and wear resistance, low noise.  
Excellent Hydrolysis Resistance.  
Suitable for tropical regions and humid working environments.  
PU Red, Curved Wheel Surface

Wheel Tread: Aluminum core  
Wheel Center: High-quality polyurethane  
Bearings: —

Drawings are for reference only and may differ from the product



Picture may differ from original product

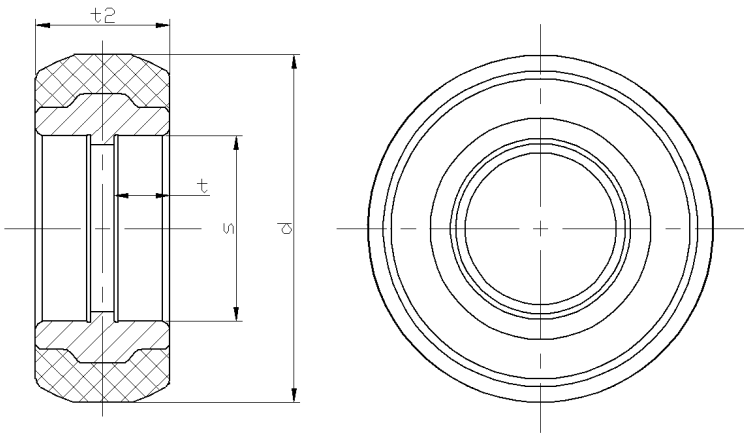
Technical Data

<input checked="" type="radio"/> Metric <input type="radio"/> Imperial	
Wheel Diameter(D)	75mm
Wheel Width(T2)	29mm
Wheel Bearing	Without Bearing
Axle Bore(d)	
Axle Bore(S)	40mm
Bearing Bore Depth(t)	12mm
Hub Lenth(T1)	29mm
Hardness Of Tread	94±5° Shore A
Load Capacity (Dynamic)	189kgs
Load Capacity (Static)	283.5kgs
Temperature	-20°C to +80°C
Electrical Conductivity	N/A
Anti-Static	N/A
Weight	0.15kgs
Standard	ISO22883

Advantages at a glance

Rolling Resistance	● ● ● ○ ○
Operating Noise	● ● ● ● ○
Floor Surface Preservation	● ● ● ● ○

2D Dimensional Drawing of Single Wheel



\* For any deviation between metric and imperial spec, please refer to the metric spec.