

APU Series



Wheel Diameter × Wheel Width 75 x 29mm

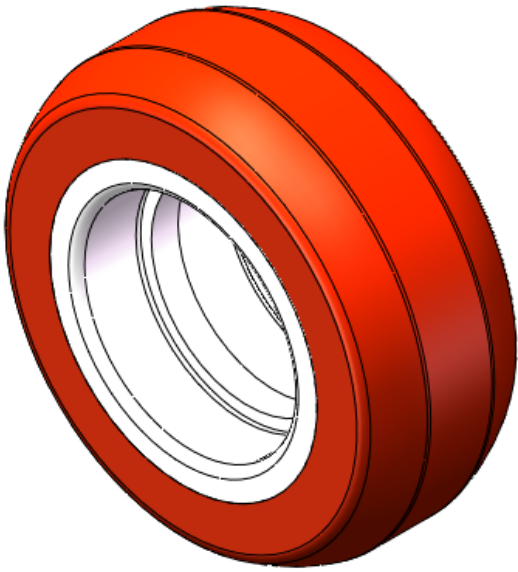
EAN

YJ-12035903130100

Excellent Floor Surface Preservation and wear resistance, low noise.
Excellent Hydrolysis Resistance.
Suitable for tropical regions and humid working environments.
PU Red, Curved Wheel Surface

Wheel Tread: Aluminum core
Wheel Center: High-quality polyurethane
Bearings: —

Drawings are for reference only and may differ from the product



Picture may differ from original product

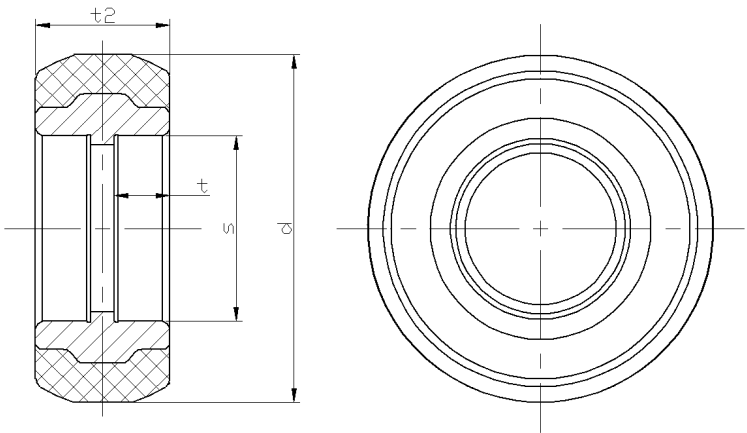
Technical Data

<input checked="" type="radio"/> Imperial <input type="radio"/> Metric	
Wheel Diameter(D)	3 "
Wheel Width(T2)	1-3/16 "
Wheel Bearing	Without Bearing
Axle Bore(d)	
Axle Bore(S)	1-5/8 "
Bearing Bore Depth(t)	1/2 "
Hub Lenth(T1)	1-3/16 "
Hardness Of Tread	94±5° Shore A
Load Capacity (Dynamic)	417lbs
Load Capacity (Static)	625lbs
Temperature	-4°F to +176°F
Electrical Conductivity	N/A
Anti-Static	N/A
Weight	0.3lbs
Standard	ISO22883

Advantages at a glance

Rolling Resistance	● ● ● ○ ○
Operating Noise	● ● ● ● ○
Floor Surface Preservation	● ● ● ● ○

2D Dimensional Drawing of Single Wheel



* For any deviation between metric and imperial spec, please refer to the metric spec.