

AQPU Series



Wheel Diameter × Wheel Width 75 x 29mm

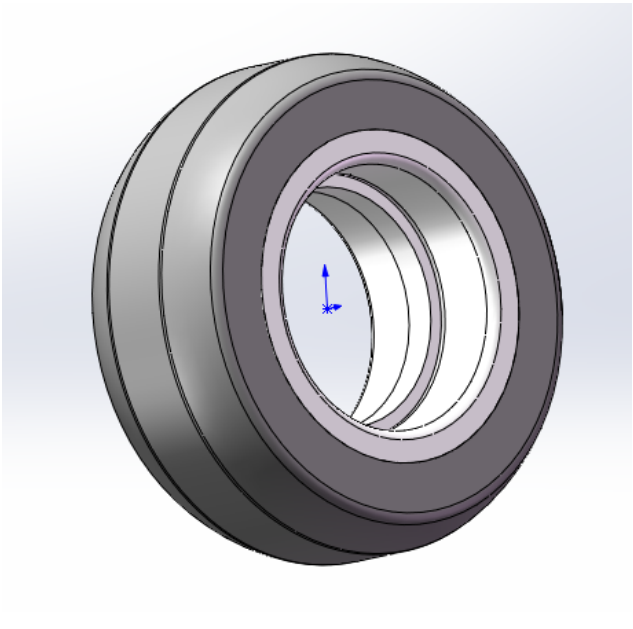
EAN

YJ-12035903130400

Good elasticity, reduces pushing resistance, improves machine controllability, and has good wear resistance.  
Excellent Hydrolysis Resistance.  
Suitable for tropical regions and humid working environments.  
QPU brown Wheel Tread with curved/machined random texture.  
Increases grip on the ground and effectively improves anti-slip ability.

Wheel Tread: Aluminum core  
Wheel Center: High-quality polyurethane  
Bearings: —

Drawings are for reference only and may differ from the product



Picture may differ from original product

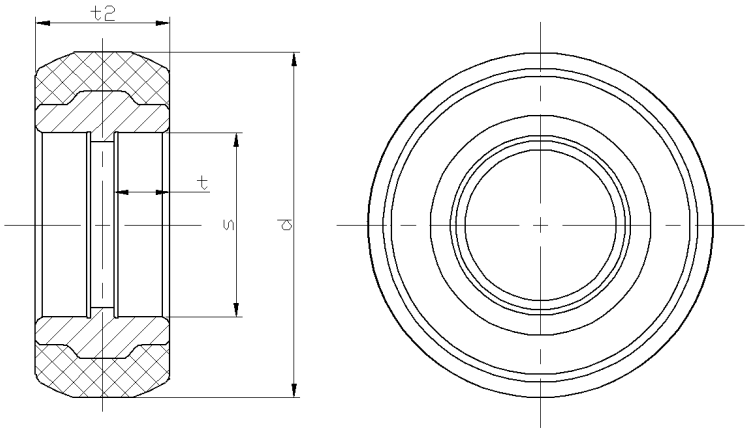
Technical Data

<input checked="" type="radio"/> Metric <input type="radio"/> Imperial	
Wheel Diameter(D)	75mm
Wheel Width(T2)	29mm
Wheel Bearing	Without Bearing
Axle Bore(d)	
Axle Bore(S)	40mm
Bearing Bore Depth(t)	12mm
Hub Lenth(T1)	29mm
Hardness Of Tread	77±5° Shore A
Load Capacity (Dynamic)	162kgs
Load Capacity (Static)	243kgs
Temperature	-20°C to +70°C
Electrical Conductivity	N/A
Anti-Static	N/A
Weight	0.15kgs
Standard	ISO22883

Advantages at a glance

Rolling Resistance	● ● ● ● ●
Operating Noise	● ● ● ● ●
Floor Surface Preservation	● ● ● ● ●

2D Dimensional Drawing of Single Wheel



\* For any deviation between metric and imperial spec, please refer to the metric spec.