

AQPU Series



Wheel Diameter × Wheel Width 75 x 29mm

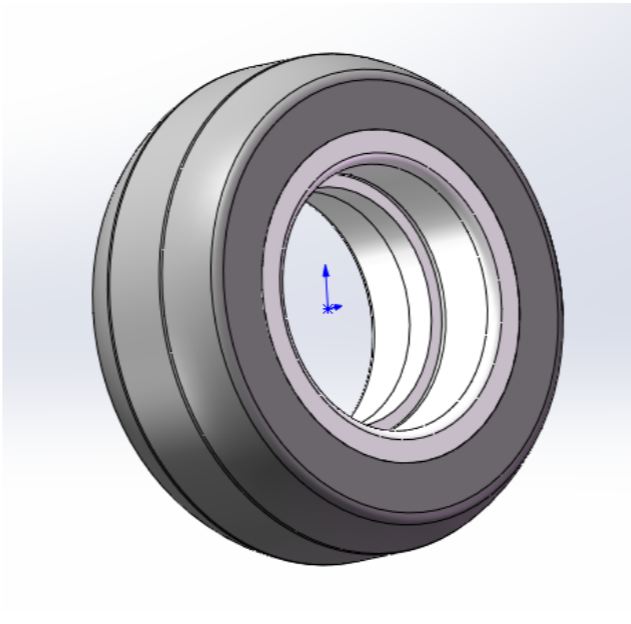
EAN

YJ-12035903130400

Good elasticity, reduces pushing resistance, improves machine controllability, and has good wear resistance.
Excellent Hydrolysis Resistance.
Suitable for tropical regions and humid working environments.
QPU brown Wheel Tread with curved/machined random texture.
Increases grip on the ground and effectively improves anti-slip ability.

Wheel Tread: Aluminum core
Wheel Center: High-quality polyurethane
Bearings: —

Drawings are for reference only and may differ from the product



Picture may differ from original product

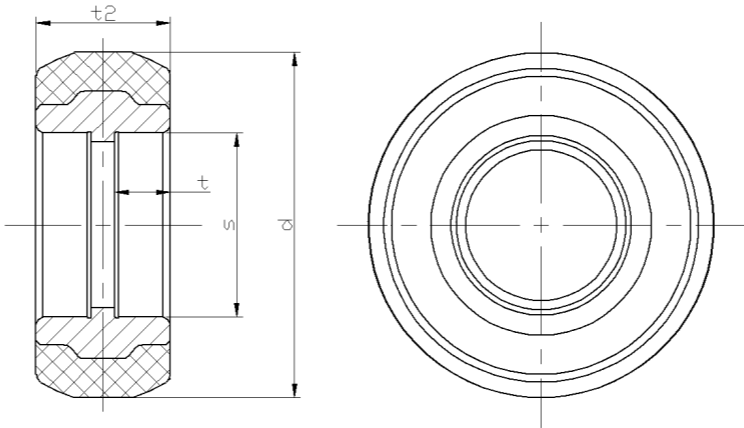
Technical Data

<input checked="" type="radio"/> Imperial <input type="radio"/> Metric	
Wheel Diameter(D)	3 "
Wheel Width(T2)	1-3/16 "
Wheel Bearing	Without Bearing
Axle Bore(d)	
Axle Bore(S)	1-5/8 "
Bearing Bore Depth(t)	1/2 "
Hub Lenth(T1)	1-3/16 "
Hardness Of Tread	77±5° Shore A
Load Capacity (Dynamic)	357lbs
Load Capacity (Static)	536lbs
Temperature	-4°F to +158°F
Electrical Conductivity	N/A
Anti-Static	N/A
Weight	0.3lbs
Standard	ISO22883

Advantages at a glance

Rolling Resistance	● ● ● ● ●
Operating Noise	● ● ● ● ●
Floor Surface Preservation	● ● ● ● ●

2D Dimensional Drawing of Single Wheel



* For any deviation between metric and imperial spec, please refer to the metric spec.