

AQPU Series



Wheel Diameter × Wheel Width 73 x 25mm

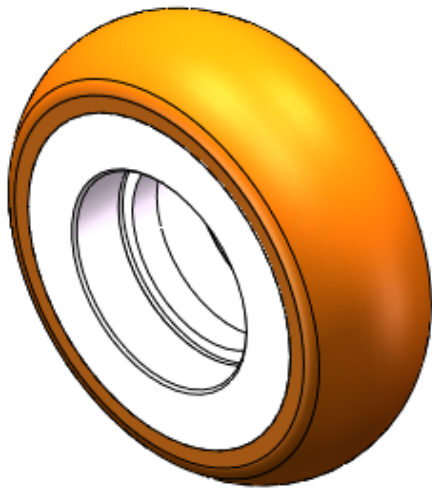
EAN

YJ-12036003100200

It has good elasticity, reduces pushing resistance, improves machine controllability, and has good wear resistance.  
It has excellent Hydrolysis Resistance.  
Suitable for tropical regions and humid working environments.  
QPU, brown, Wheel Tread profile: Crown.

Wheel Center: Aluminum core  
Wheel Tread: High-quality polyurethane  
Bearings: —

Drawings are for reference only and may differ from the product



Picture may differ from original product

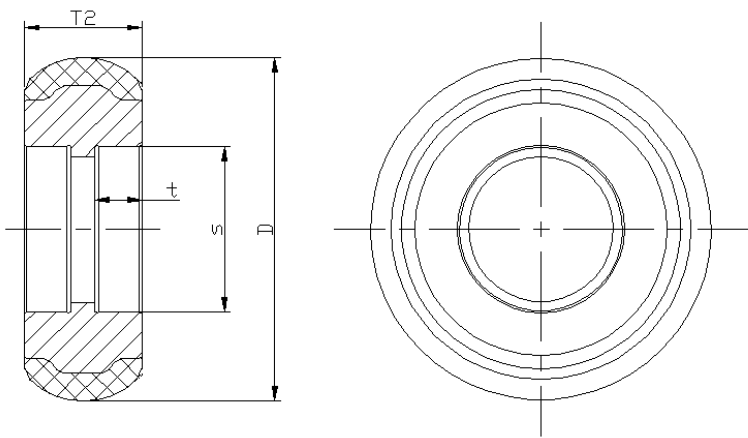
Technical Data

<input checked="" type="radio"/> Metric <input type="radio"/> Imperial	
Wheel Diameter(D)	73mm
Wheel Width(T2)	25mm
Wheel Bearing	Without Bearing
Axle Bore(d)	—
Axle Bore(S)	35mm
Bearing Bore Depth(t)	10mm
Hub Lenth(T1)	25mm
Hardness Of Tread	92±5° Shore A
Load Capacity (Dynamic)	202.5kgs
Load Capacity (Static)	303.75kgs
Temperature	-20°C to +70°C
Electrical Conductivity	N/A
Anti-Static	N/A
Weight	0.15kgs
Standard	ISO22883

Advantages at a glance

Rolling Resistance	● ● ● ● ●
Operating Noise	● ● ● ● ●
Floor Surface Preservation	● ● ● ● ●

2D Dimensional Drawing of Single Wheel



\* For any deviation between metric and imperial spec, please refer to the metric spec.