

XPU Series



Wheel Diameter × Wheel Width 230 x 70mm

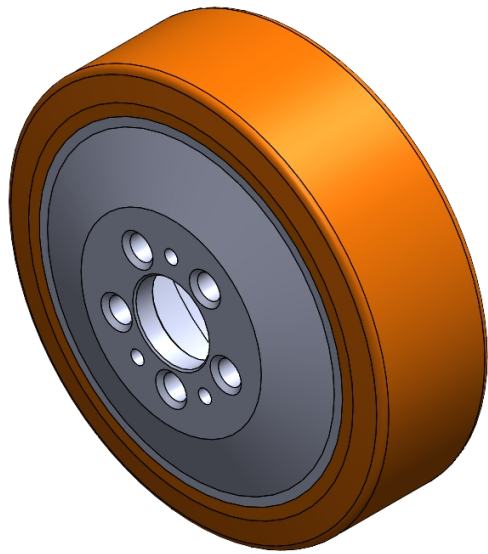
EAN

YJ-12036109286399

Excellent Mechanical Properties, maintaining Heavy Load during high-speed movement; good wear resistance; not easily deformed.
Excellent resistance to chemicals, solvents, and corrosion.
Suitable for Forklift Trucks, electric Forklift Trucks, Heavy duty machines, AGVs, and automated industrial applications.
XPU Brown

Wheel Center: cast iron core
Wheel Tread: High-quality polyurethane

Product descriptions are for reference only. The actual product shall prevail.



Picture may differ from original product

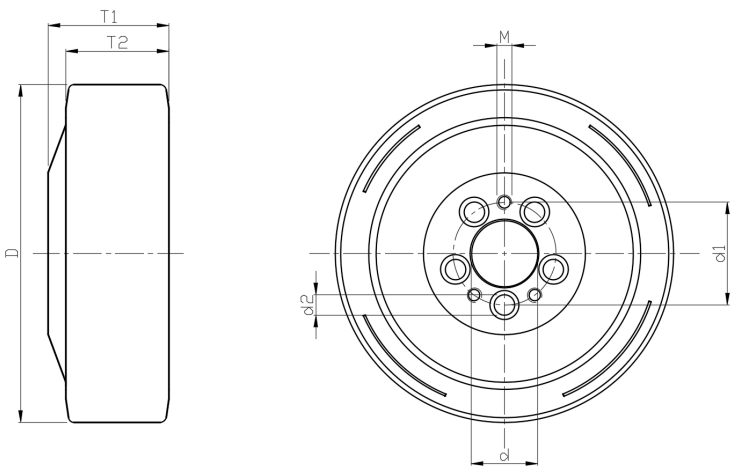
Technical Data

<input checked="" type="radio"/> Metric <input type="radio"/> Imperial	
Wheel Diameter (D)	230mm
Wheel Width (T2)	70mm
Wheel installation — Hub Lenth (T1)	82mm
Wheel center-bore diameter (d)	45mm
Wheel Mounting Bolt Hole PCD Diameter	14mm
Wheel Mounting Bolt Hole PCD	70mm
# Of Wheel mounting bolt boles	5
Wheel mounting bolt hole (M)	10
Number of wheel mounting bolt holes	3
Load Capacity (Static)	2250kgs
Load Capacity at 4 km/h	1500kgs
Load Capacity at 6 km/h	1275kgs
Load Capacity at 10 km/h	1050kgs
Load Capacity at 16 km/h	600kgs
Hardness Of Tread	92±5° Shore A
Temperature	-20°C to +70°C
Tread Pattern	—
Wheel centre/ rim	Cast iron/air-dried black paint
Non-Marking	Y
Conductive	N/A
Anti	N/A
Weight	5.94kgs
Standard	ISO22883

Advantages at a glance

Rolling Resistance	● ● ● ● ●
Operating Noise	● ● ● ● ●
Floor Surface Preservation	● ● ● ● ● ○

2D Dimensional Drawing of Drive Wheel



* For any deviation between metric and imperial spec, please refer to the metric spec.