



XPU Series

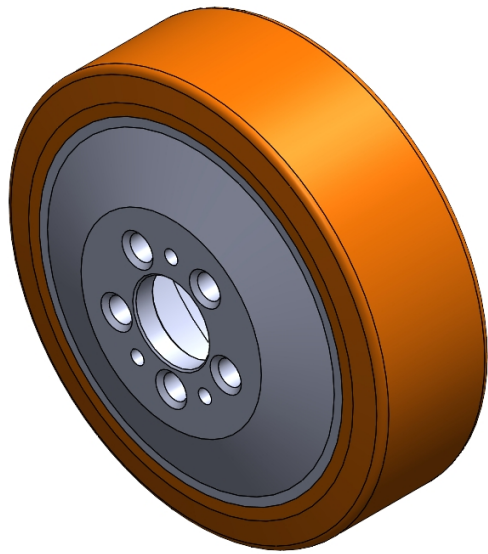
Wheel Diameter × Wheel Width 230 x 70mm

EAN

YJ-12036109286399

Excellent Mechanical Properties, maintaining Heavy Load during high-speed movement; good wear resistance; not easily deformed.
Excellent resistance to chemicals, solvents, and corrosion.
Suitable for Forklift Trucks, electric Forklift Trucks, Heavy duty machines, AGVs, and automated industrial applications.
XPU Brown

Wheel Center: cast iron core
Wheel Tread: High-quality polyurethane



Picture may differ from original product

Product descriptions are for reference only. The actual product shall prevail.

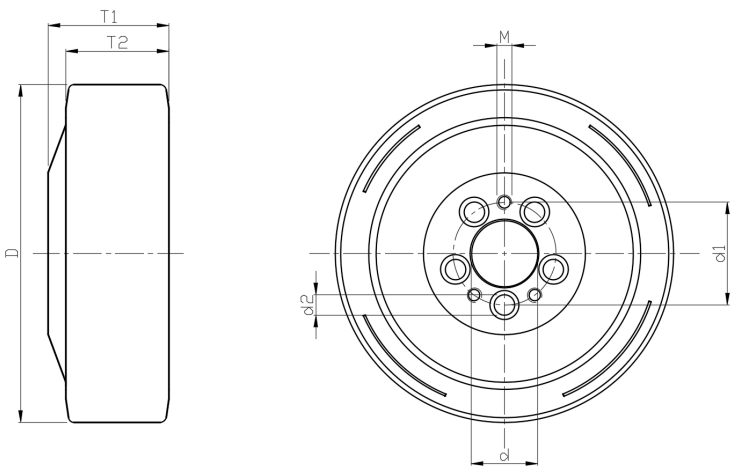
Technical Data

<input checked="" type="radio"/> Imperial <input type="radio"/> Metric	
Wheel Diameter (D)	9-1/8
Wheel Width (T2)	2-13/16 "
Wheel installation — Hub Lenth (T1)	82mm
Wheel center-bore diameter (d)	1-13/16 "
Wheel Mounting Bolt Hole PCD Diameter	9/16 "
Wheel Mounting Bolt Hole PCD	2-13/16 "
# Of Wheel mounting bolt boles	5
Wheel mounting bolt hole (M)	10
Number of wheel mounting bolt holes	3
Load Capacity (Static)	4960lbs
Load Capacity at 4 km/h	3307lbs
Load Capacity at 6 km/h	2811lbs
Load Capacity at 10 km/h	2315lbs
Load Capacity at 16 km/h	600kgs
Hardness Of Tread	92±5° Shore A
Temperature	-4°F to +158°F
Tread Pattern	—
Wheel centre/ rim	Cast iron/air-dried black paint
Non-Marking	Y
Conductive	N/A
Anti	N/A
Weight	13.1lbs
Standard	ISO22883

Advantages at a glance

Rolling Resistance	● ● ● ● ●
Operating Noise	● ● ● ● ●
Floor Surface Preservation	● ● ● ● ● ○

2D Dimensional Drawing of Drive Wheel



* For any deviation between metric and imperial spec, please refer to the metric spec.