

XPU Series



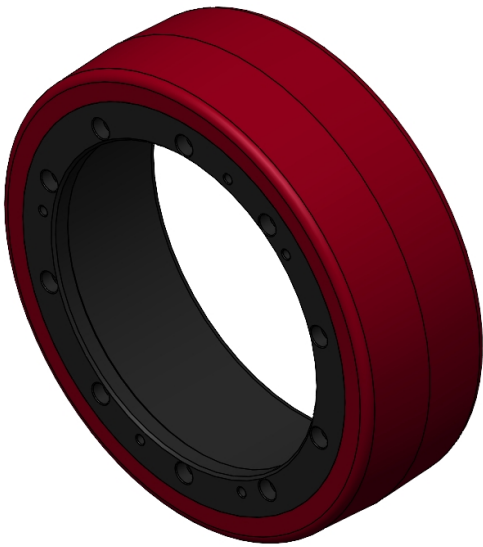
Wheel Diameter × Wheel Width 250 x 80mm

EAN

YJ-12036110330101

Excellent Mechanical Properties, maintaining Heavy Load during high-speed movement; good wear resistance; not easily deformed.  
Excellent resistance to chemicals, solvents, and corrosion.  
Suitable for Forklift Trucks, Electric Stackers, Heavy duty machines, AGVs, and automated industrial applications.  
XPU, burgundy, Wheel Tread profile: Crown.

Wheel Center: cast iron core  
Wheel Tread: High-quality polyurethane



Picture may differ from original product

Product descriptions are for reference only. The actual product shall prevail.

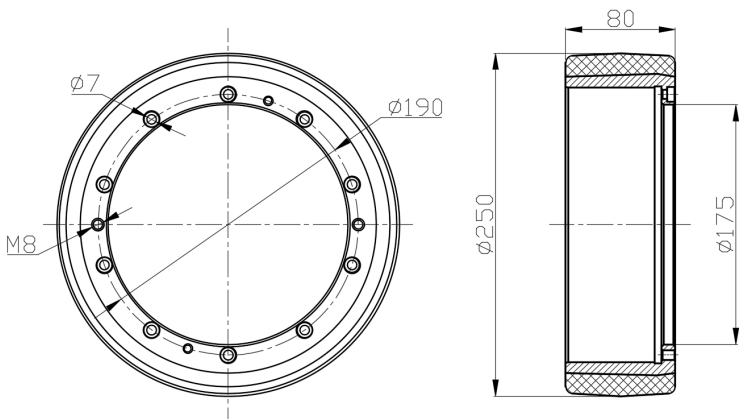
Technical Data

<input checked="" type="radio"/> Imperial <input type="radio"/> Metric	
Wheel Diameter （D）	10 "
Wheel Width （T2）	3-1/8 "
Wheel installation — Hub Lenth (T1)	—
Wheel center-bore diameter (d)	7 "
Wheel Mounting Bolt Hole PCD Diameter	1/4 "
Wheel Mounting Bolt Hole PCD	7-1/2 "
# Of Wheel mounting bolt boles	10
Wheel mounting bolt hole (M)	M8
Number of wheel mounting bolt holes	2
Load Capacity (Static)	5291lbs
Load Capacity at 4 km/h	3527lbs
Load Capacity at 6 km/h	2998lbs
Load Capacity at 10 km/h	2469lbs
Load Capacity at 16 km/h	1411lbs
Hardness Of Tread	92±5° Shore A
Temperature	-4°F to +158°F
Tread Pattern	—
Wheel centre/ rim	Cast iron / spray-baked black paint
Non-Marking	Y
Conductive	N/A
Anti	N/A
Weight	10.7lbs
Standard	ISO22883

Advantages at a glance

Rolling Resistance	● ● ● ● ●
Operating Noise	● ● ● ● ●
Floor Surface Preservation	● ● ● ● ● ○

2D Dimensional Drawing of Drive Wheel



\* For any deviation between metric and imperial spec, please refer to the metric spec.