

XPU Series

Wheel Diameter × Wheel Width 250 x 100mm

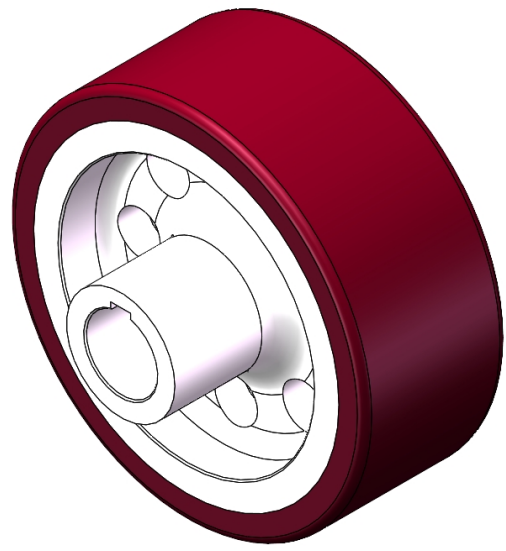
EAN

YJ-12036110400204

Excellent Mechanical Properties, maintaining Heavy Load during high-speed movement; good wear resistance; not easily deformed.
Excellent resistance to chemicals, solvents, and corrosion.
Suitable for Forklift Trucks, electric Forklift Trucks, Heavy duty machines, AGVs, and automated industrial applications.
XPU Burgundy

Wheel Center: Iron core
Wheel Tread: High-quality polyurethane

Product descriptions are for reference only. The actual product shall prevail.



Picture may differ from original product

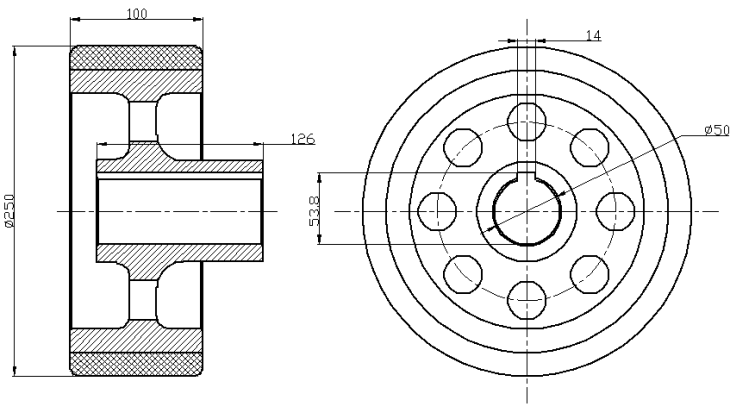
Technical Data

<input checked="" type="radio"/> Imperial <input type="radio"/> Metric	
Wheel Diameter (D)	10 "
Wheel Width (T2)	4 "
Wheel installation — Hub Lenth (T1)	5 "
Wheel Mounting Bore Diameter	2 "
Keyway Width	9/16 "
Wheel Keyway Depth (H)	53.8
Load Capacity (Static)	8267lbs
Load Capacity at 4 km/h	5512lbs
Load Capacity at 6 km/h	4685lbs
Load Capacity at 10 km/h	3858lbs
Load Capacity at 16 km/h	1000kgs
Hardness Of Tread	92±5° Shore A
Temperature	-4°F to +158°F
Tread Pattern	—
Wheel centre/ rim	Iron core/galvanized
Non-Marking	Y
Conductive	N/A
Anti	N/A
Weight	34.2lbs
Standard	ISO22883

Advantages at a glance

Rolling Resistance	● ● ● ● ●
Operating Noise	● ● ● ● ●
Floor Surface Preservation	● ● ● ● ● ○

2D Dimensional Drawing of Drive Wheel



* For any deviation between metric and imperial spec, please refer to the metric spec.