



XPU Series

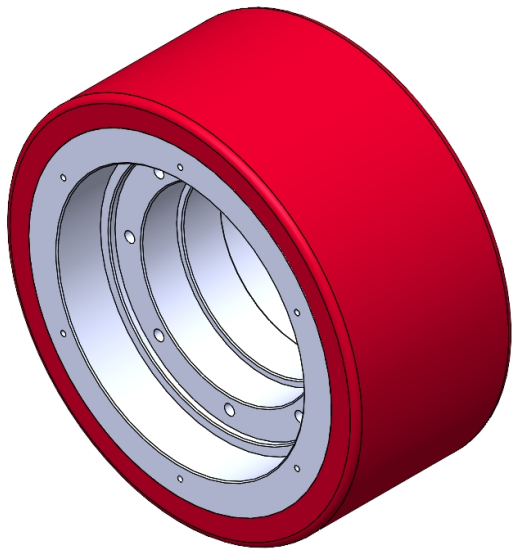
Wheel Diameter × Wheel Width 300 x 135mm

EAN

YJ-12036112530103

Excellent Mechanical Properties, maintaining Heavy Load during high-speed movement; good wear resistance; not easily deformed.  
Excellent resistance to chemicals, solvents, and corrosion.  
Suitable for Forklift Trucks, Electric Stackers, Heavy duty machines, AGVs, and automated industrial applications.  
XPU, Burgundy

Wheel Center: Iron core  
Wheel Tread: High-quality polyurethane



Picture may differ from original product

Product descriptions are for reference only. The actual product shall prevail.

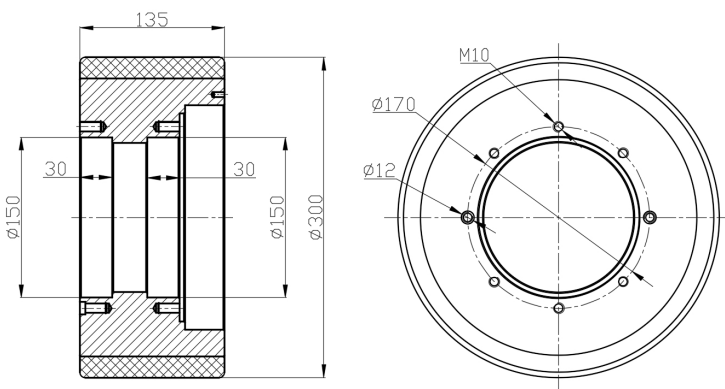
Technical Data

<input checked="" type="radio"/> Imperial <input type="radio"/> Metric	
Wheel Diameter (D)	11-13/16 "
Wheel Width (T2)	5-7/16
Wheel installation — Hub Lenth (T1)	—
Wheel center-bore diameter (d)	6 "
Wheel Mounting Bolt Hole PCD Diameter	1/2 "
Wheel Mounting Bolt Hole PCD	6-13/16 "
# Of Wheel mounting bolt boles	2
Wheel mounting bolt hole (M)	10
Number of wheel mounting bolt holes	8
Load Capacity (Static)	8929lbs
Load Capacity at 4 km/h	5952lbs
Load Capacity at 6 km/h	5060lbs
Load Capacity at 10 km/h	4167lbs
Load Capacity at 16 km/h	2381lbs
Hardness Of Tread	92±5° Shore A
Temperature	-4°F to +158°F
Tread Pattern	—
Wheel centre/ rim	Iron core/galvanized
Non-Marking	Y
Conductive	N/A
Anti	N/A
Weight	78.0lbs
Standard	ISO22883

Advantages at a glance

Rolling Resistance	● ● ● ● ●
Operating Noise	● ● ● ● ●
Floor Surface Preservation	● ● ● ● ● ○

2D Dimensional Drawing of Drive Wheel



\* For any deviation between metric and imperial spec, please refer to the metric spec.