

XPU Series



Wheel Diameter × Wheel Width 348 x 142mm

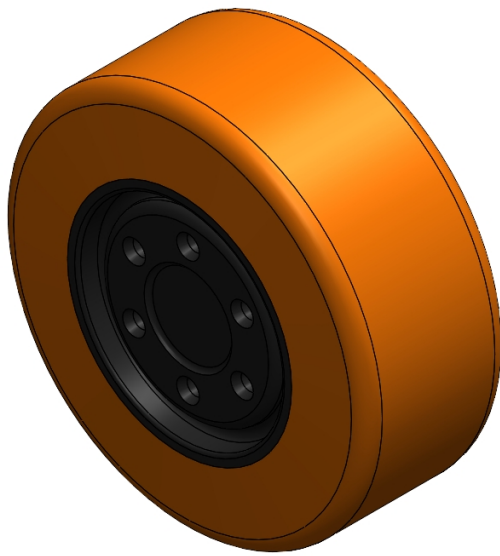
EAN

YJ-12036114586101

Excellent Mechanical Properties, maintaining Heavy Load during high-speed movement; good wear resistance; not easily deformed.  
Excellent resistance to chemicals, solvents, and corrosion.  
Suitable for Forklift Trucks, electric Forklift Trucks, Heavy duty machines, AGVs, and automated industrial applications.  
XPU Orange

Wheel Center: cast iron core  
Wheel Tread: High-quality polyurethane

Product descriptions are for reference only. The actual product shall prevail.



Picture may differ from original product

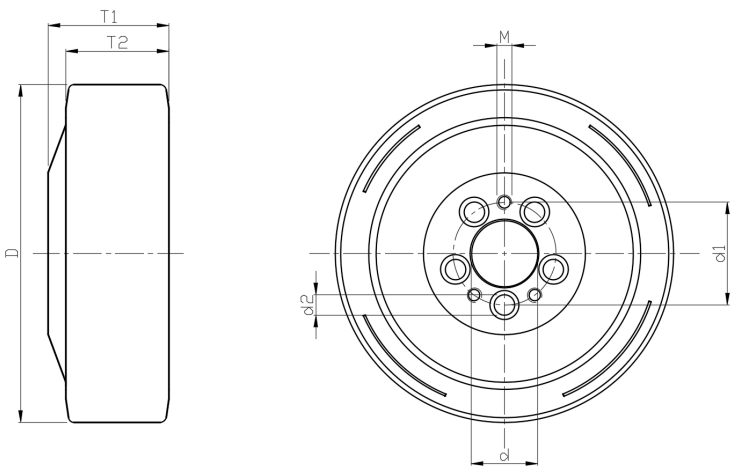
Technical Data

|  |  |
|--|--|
| <input checked="" type="radio"/> Metric <input type="radio"/> Imperial |  |
| Wheel Diameter (D)   | 348mm                                  |
| Wheel Width (T2)   | 142mm                                  |
| Wheel installation — Hub Lenth (T1)                                    | —                                      |
| Wheel center-bore diameter (d)   | —                                      |
| Wheel Mounting Bolt Hole PCD Diameter                                  | 16mm                                   |
| Wheel Mounting Bolt Hole PCD   | 118mm                                  |
| # Of Wheel mounting bolt boles   | 6                                      |
| Wheel mounting bolt hole (M)   | —                                      |
| Number of wheel mounting bolt holes                                    | —                                      |
| Load Capacity (Static)   | 3300kgs                                |
| Load Capacity at 4 km/h  | 2200kgs                                |
| Load Capacity at 6 km/h  | 1870kgs                                |
| Load Capacity at 10 km/h   | 1540kgs                                |
| Load Capacity at 16 km/h   | 880kgs                                 |
| Hardness Of Tread  | 92±5° Shore A                          |
| Temperature  | -20°C to +70°C                         |
| Tread Pattern  | —                                      |
| Wheel centre/ rim  | Cast iron / spray-baked<br>black paint |
| Non-Marking  | Y                                      |
| Conductive   | N/A                                    |
| Anti   | N/A                                    |
| Weight   | 24.26kgs                               |
| Standard   | ISO22883                               |

Advantages at a glance

|                            |             |
|----------------------------|-------------|
| Rolling Resistance         | ● ● ● ● ●   |
| Operating Noise            | ● ● ● ● ●   |
| Floor Surface Preservation | ● ● ● ● ● ○ |

2D Dimensional Drawing of Drive Wheel



\* For any deviation between metric and imperial spec, please refer to the metric spec.