



QPU Series

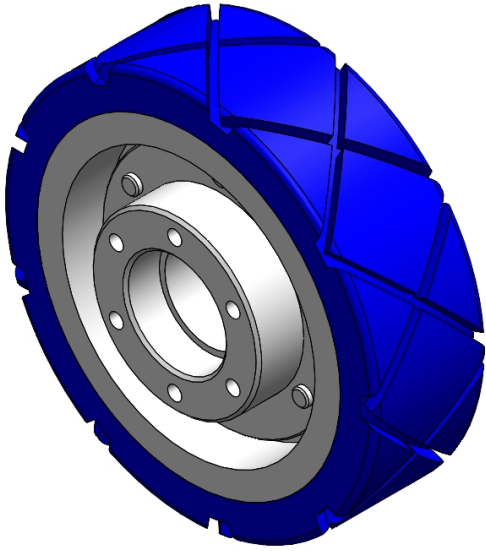
Wheel Diameter × Wheel Width 133 x 40mm

EAN

YJ-12036305150179

Good elasticity, reduces pushing resistance, improves machine controllability, and has good wear resistance.
Excellent Hydrolysis Resistance.
Suitable for tropical regions and humid working environments.
QPU blue, machined diamond texture.
Increases grip on the ground, effectively improving anti-slip ability.

Wheel Center: Iron core
Wheel Tread: High-quality polyurethane



Picture may differ from original product

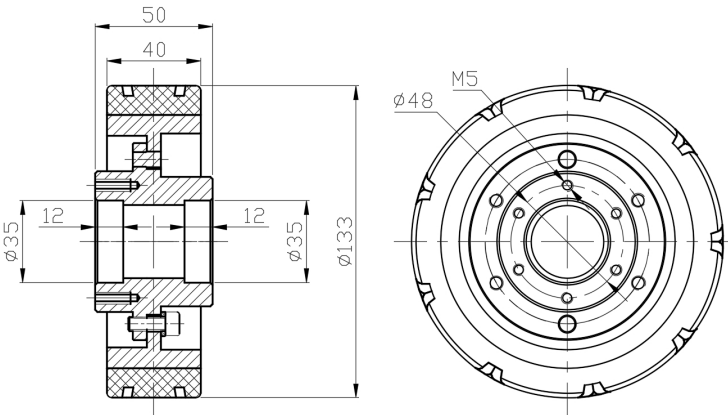
Technical Data

<input checked="" type="radio"/> Metric <input type="radio"/> Imperial	
Wheel Diameter (D)	133mm
Wheel Width (T2)	40mm
Wheel installation — Hub Lenth (T1)	50mm
Wheel center-bore diameter (d)	35mm
Wheel Mounting Bolt Hole PCD Diameter	—
Wheel Mounting Bolt Hole PCD	48mm
# Of Wheel mounting bolt boles	—
Wheel mounting bolt hole (M)	5
Number of wheel mounting bolt holes	6
Load Capacity (Static)	600kgs
Load Capacity at 4 km/h	400kgs
Load Capacity at 6 km/h	340kgs
Load Capacity at 10 km/h	280kgs
Load Capacity at 16 km/h	160kgs
Hardness Of Tread	87±5° Shore A
Temperature	-20°C to +70°C
Tread Pattern	diamond pattern
Wheel centre/ rim	Iron core/galvanized
Non-Marking	Y
Conductive	N/A
Anti	N/A
Weight	2.03kgs
Standard	ISO22883

Advantages at a glance

Rolling Resistance	● ● ● ● ●
Operating Noise	● ● ● ● ●
Floor Surface Preservation	● ● ● ● ●

2D Dimensional Drawing of Drive Wheel



* For any deviation between metric and imperial spec, please refer to the metric spec.