



QPU Series

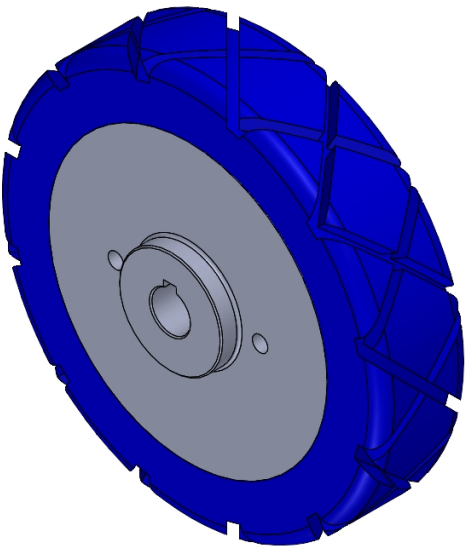
Wheel Diameter × Wheel Width 150 x 35mm

EAN

YJ-12036306130303

Good elasticity, reduces pushing resistance, improves machine controllability, and has good wear resistance.
Excellent Hydrolysis Resistance.
Suitable for tropical regions and humid working environments.
QPU, blue, with machined diamond texture.
Increases grip on the ground, effectively improving anti-slip ability.

Wheel Center: Iron core
Wheel Tread: High-quality polyurethane



Picture may differ from original product

Product descriptions are for reference only. The actual product shall prevail.

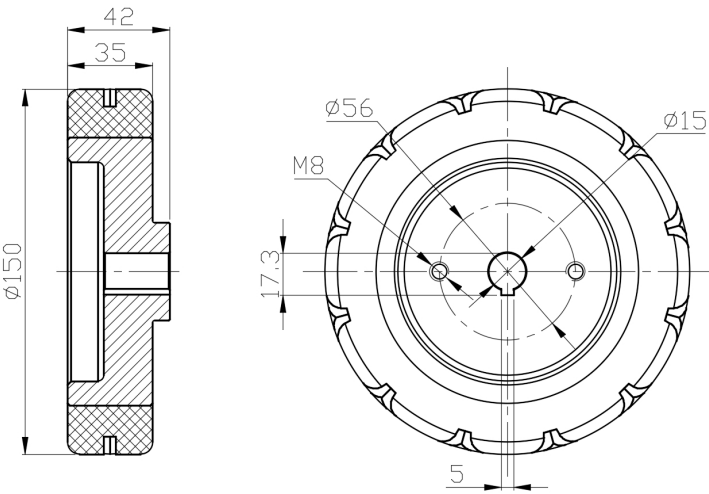
Technical Data

<input checked="" type="radio"/> Metric <input type="radio"/> Imperial	
Wheel Diameter (D)	150mm
Wheel Width (T2)	35mm
Wheel installation — Hub Lenth (T1)	42mm
Wheel Mounting Bore Diameter	15mm
Keyway Width	5mm
Wheel Keyway Depth (H)	17.3mm
Load Capacity (Static)	534kgs
Load Capacity at 4 km/h	356kgs
Load Capacity at 6 km/h	302kgs
Load Capacity at 10 km/h	249kgs
Load Capacity at 16 km/h	142kgs
Hardness Of Tread	87±5° Shore A
Temperature	-20°C to +70°C
Tread Pattern	—
Wheel centre/ rim	Cast iron / spray-baked black paint
Non-Marking	Y
Conductive	N/A
Anti	N/A
Weight	2.17kgs
Standard	ISO22883

Advantages at a glance

Rolling Resistance	• • • • •
Operating Noise	• • • • •
Floor Surface Preservation	• • • • •

2D Dimensional Drawing of Drive Wheel



* For any deviation between metric and imperial spec, please refer to the metric spec.