



QPU Series

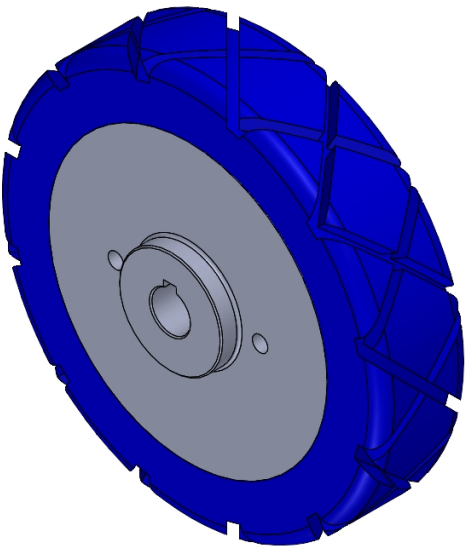
Wheel Diameter × Wheel Width 150 x 35mm

EAN

YJ-12036306130303

Good elasticity, reduces pushing resistance, improves machine controllability, and has good wear resistance.
Excellent Hydrolysis Resistance.
Suitable for tropical regions and humid working environments.
QPU, blue, with machined diamond texture.
Increases grip on the ground, effectively improving anti-slip ability.

Wheel Center: Iron core
Wheel Tread: High-quality polyurethane



Picture may differ from original product

Product descriptions are for reference only. The actual product shall prevail.

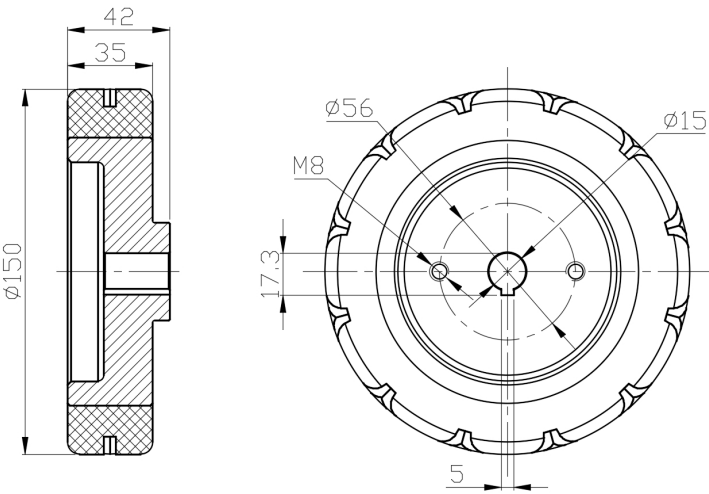
Technical Data

<input checked="" type="radio"/> Imperial <input type="radio"/> Metric	
Wheel Diameter (D)	6 "
Wheel Width (T2)	1-7/16 "
Wheel installation — Hub Lenth (T1)	1-11/16 "
Wheel Mounting Bore Diameter	5/8 "
Keyway Width	1/4 "
Wheel Keyway Depth (H)	11/16 "
Load Capacity (Static)	1177lbs
Load Capacity at 4 km/h	785lbs
Load Capacity at 6 km/h	666lbs
Load Capacity at 10 km/h	549lbs
Load Capacity at 16 km/h	313lbs
Hardness Of Tread	87±5° Shore A
Temperature	-4°F to +158°F
Tread Pattern	—
Wheel centre/ rim	Cast iron / spray-baked black paint
Non-Marking	Y
Conductive	N/A
Anti	N/A
Weight	4.8lbs
Standard	ISO22883

Advantages at a glance

Rolling Resistance	● ● ● ● ●
Operating Noise	● ● ● ● ●
Floor Surface Preservation	● ● ● ● ●

2D Dimensional Drawing of Drive Wheel



* For any deviation between metric and imperial spec, please refer to the metric spec.