



QPU Series

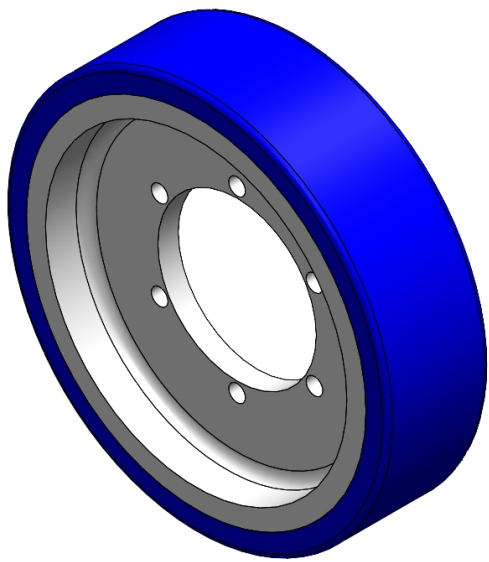
Wheel Diameter × Wheel Width 150 x 40mm

EAN

YJ-12036306150103

Good elasticity, reduces pushing resistance, improves machine controllability, and has good wear resistance.
Excellent Hydrolysis Resistance.
Suitable for tropical regions and humid working environments.
QPU, Blue

Wheel Center: Iron core
Wheel Tread: High-quality polyurethane



Picture may differ from original product

Product descriptions are for reference only. The actual product shall prevail.

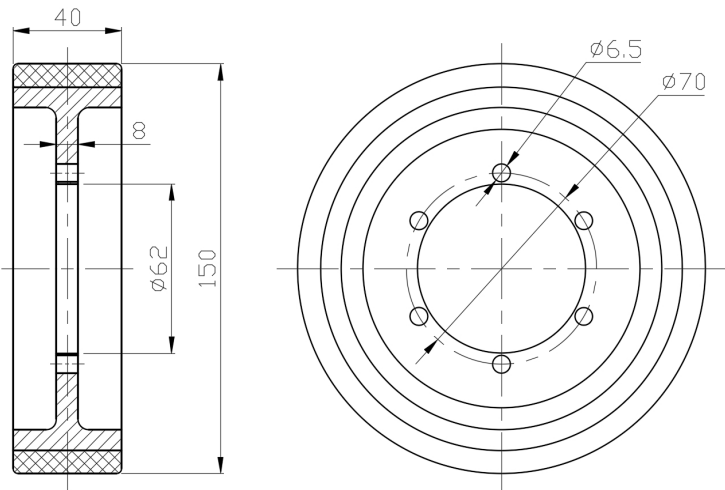
Technical Data

<input checked="" type="radio"/> Imperial <input type="radio"/> Metric	
Wheel Diameter (D)	6 "
Wheel Width (T2)	1-5/8 "
Wheel installation — Hub Lenth (T1)	3/8 "
Wheel center-bore diameter (d)	2-1/2 "
Wheel Mounting Bolt Hole PCD Diameter	1/4 "
Wheel Mounting Bolt Hole PCD	2-13/16 "
# Of Wheel mounting bolt boles	6
Wheel mounting bolt hole (M)	—
Number of wheel mounting bolt holes	—
Load Capacity (Static)	1587lbs
Load Capacity at 4 km/h	1058lbs
Load Capacity at 6 km/h	899lbs
Load Capacity at 10 km/h	741lbs
Load Capacity at 16 km/h	423lbs
Hardness Of Tread	87±5° Shore A
Temperature	-4°F to +158°F
Tread Pattern	—
Wheel centre/ rim	Iron core/galvanized
Non-Marking	Y
Conductive	N/A
Anti	N/A
Weight	3.5lbs
Standard	ISO22883

Advantages at a glance

Rolling Resistance	• • • • •
Operating Noise	• • • • •
Floor Surface Preservation	• • • • •

2D Dimensional Drawing of Drive Wheel



* For any deviation between metric and imperial spec, please refer to the metric spec.