



QPU Series

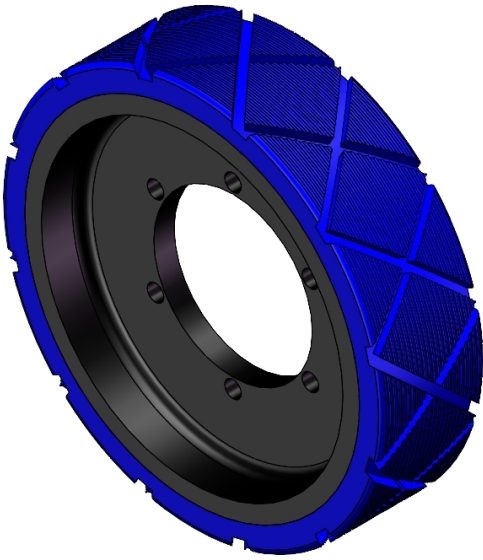
Wheel Diameter × Wheel Width 150 x 40mm

EAN

YJ-12036306151703

Good elasticity, reduces pushing resistance, improves machine controllability, and has good wear resistance.
Excellent Hydrolysis Resistance.
Suitable for tropical regions and humid working environments.
QPU, blue, surface machined with diamond and vertical textures.
Increases grip on the ground, effectively improving anti-slip ability.

Wheel Center: Iron core
Wheel Tread: High-quality polyurethane



Picture may differ from original product

Product descriptions are for reference only. The actual product shall prevail.

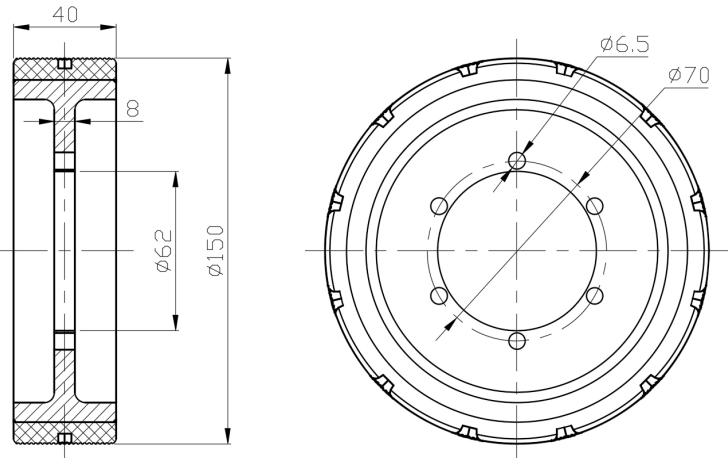
Technical Data

<input checked="" type="radio"/> Imperial <input type="radio"/> Metric	
Wheel Diameter (D)	6 "
Wheel Width (T2)	1-5/8 "
Wheel installation — Hub Lenth (T1)	3/8 "
Wheel center-bore diameter (d)	2-1/2 "
Wheel Mounting Bolt Hole PCD Diameter	1/4 "
Wheel Mounting Bolt Hole PCD	2-13/16 "
# Of Wheel mounting bolt boles	6
Wheel mounting bolt hole (M)	—
Number of wheel mounting bolt holes	—
Load Capacity (Static)	1587lbs
Load Capacity at 4 km/h	1058lbs
Load Capacity at 6 km/h	899lbs
Load Capacity at 10 km/h	741lbs
Load Capacity at 16 km/h	423lbs
Hardness Of Tread	87±5° Shore A
Temperature	-4°F to +158°F
Tread Pattern	—
Wheel centre/ rim	Iron core/galvanized
Non-Marking	Y
Conductive	N/A
Anti	N/A
Weight	3.5lbs
Standard	ISO22883

Advantages at a glance

Rolling Resistance	● ● ● ● ●
Operating Noise	● ● ● ● ●
Floor Surface Preservation	● ● ● ● ●

2D Dimensional Drawing of Drive Wheel



* For any deviation between metric and imperial spec, please refer to the metric spec.