



QPU Series

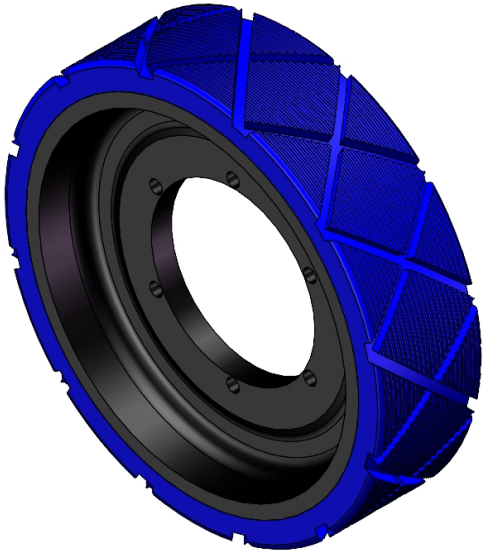
Wheel Diameter × Wheel Width 150 x 40mm

EAN

YJ-12036306186101

Good elasticity, reduces pushing resistance, improves machine controllability, and has good wear resistance.  
Excellent Hydrolysis Resistance.  
Suitable for tropical regions and humid working environments.  
QPU, blue, surface machined with diamond + vertical texture.  
Increases grip on the ground, effectively improving anti-slip ability.

Wheel Center: cast iron core  
Wheel Tread: High-quality polyurethane



Picture may differ from original product

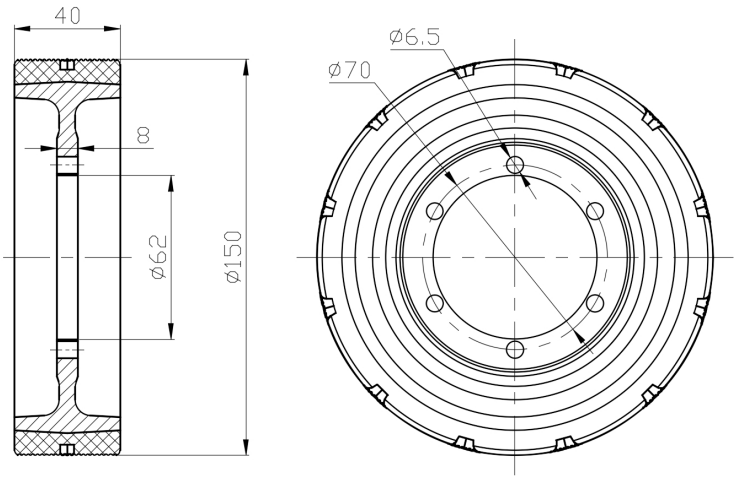
Technical Data

<input checked="" type="radio"/> Metric <input type="radio"/> Imperial	
Wheel Diameter （D）	150mm
Wheel Width （T2）	40mm
Wheel installation — Hub Lenth（T1）	8mm
Wheel center-bore diameter（d）	62mm
Wheel Mounting Bolt Hole PCD Diameter	6.5 mm
Wheel Mounting Bolt Hole PCD	70mm
# Of Wheel mounting bolt boles	6
Wheel mounting bolt hole（M）	—
Number of wheel mounting bolt holes	—
Load Capacity（Static）	720kgs
Load Capacity at 4 km/h	480kgs
Load Capacity at 6 km/h	408kgs
Load Capacity at 10 km/h	336kgs
Load Capacity at 16 km/h	192kgs
Hardness Of Tread	87±5° Shore A
Temperature	-20°C to +70°C
Tread Pattern	Diamond pattern + vertical stripe
Wheel centre/ rim	Cast iron / black paint
Non-Marking	Y
Conductive	N/A
Anti	N/A
Weight	1.26kgs
Standard	ISO22883

Advantages at a glance

Rolling Resistance	● ● ● ● ●
Operating Noise	● ● ● ● ●
Floor Surface Preservation	● ● ● ● ●

2D Dimensional Drawing of Drive Wheel



\* For any deviation between metric and imperial spec, please refer to the metric spec.