



QPU Series

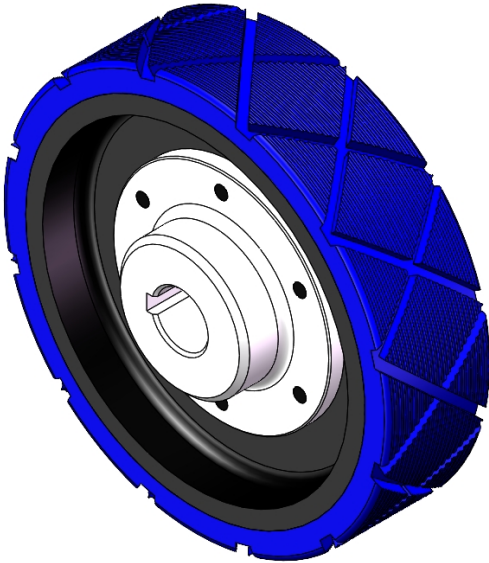
Wheel Diameter × Wheel Width 150 x 40mm

EAN

YJ-12036306186179

Good elasticity reduces pushing resistance, improves machine maneuverability, and provides good wear resistance.  
Excellent Hydrolysis Resistance.  
Suitable for tropical regions and humid working environments.  
QPU, blue, with a machined diamond and vertical textured surface.  
Increases grip on the ground, effectively improving anti-slip performance.

Wheel Center: cast iron core  
Wheel Tread: High-quality polyurethane



Picture may differ from original product

Product descriptions are for reference only. The actual product shall prevail.

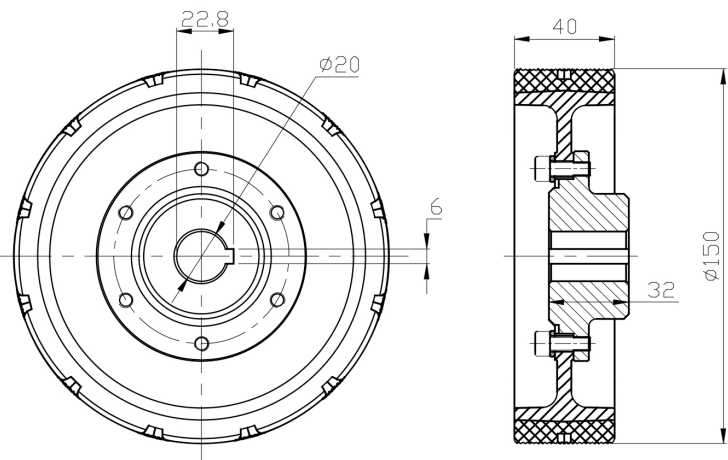
Technical Data

<input checked="" type="radio"/> Metric <input type="radio"/> Imperial	
Wheel Diameter (D)	150mm
Wheel Width (T2)	40mm
Wheel installation — Hub Lenth (T1)	32mm
Wheel Mounting Bore Diameter	20mm
Keyway Width	6mm
Wheel Keyway Depth (H)	22.8mm
Load Capacity (Static)	720kgs
Load Capacity at 4 km/h	480kgs
Load Capacity at 6 km/h	408kgs
Load Capacity at 10 km/h	336kgs
Load Capacity at 16 km/h	192kgs
Hardness Of Tread	87±5° Shore A
Temperature	-20°C to +70°C
Tread Pattern	Diamond pattern + vertical stripe
Wheel centre/ rim	Iron core/galvanized
Non-Marking	Y
Conductive	N/A
Anti	N/A
Weight	1.88kgs
Standard	ISO22883

Advantages at a glance

Rolling Resistance	● ● ● ● ●
Operating Noise	● ● ● ● ●
Floor Surface Preservation	● ● ● ● ●

2D Dimensional Drawing of Drive Wheel



\* For any deviation between metric and imperial spec, please refer to the metric spec.