



QPU Series

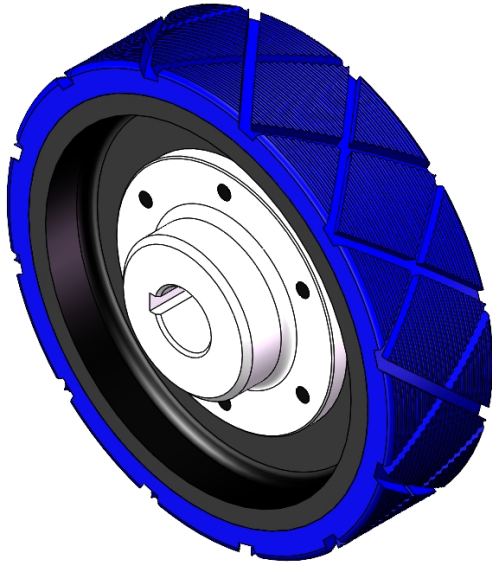
Wheel Diameter × Wheel Width 150 x 40mm

EAN

YJ-12036306186179

Good elasticity reduces pushing resistance, improves machine maneuverability, and provides good wear resistance.  
Excellent Hydrolysis Resistance.  
Suitable for tropical regions and humid working environments.  
QPU, blue, with a machined diamond and vertical textured surface.  
Increases grip on the ground, effectively improving anti-slip performance.

Wheel Center: cast iron core  
Wheel Tread: High-quality polyurethane



Picture may differ from original product

Product descriptions are for reference only. The actual product shall prevail.

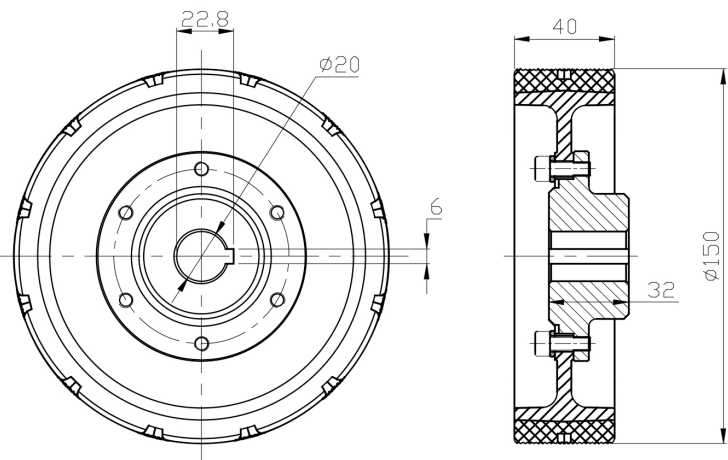
Technical Data

<input checked="" type="radio"/> Imperial <input type="radio"/> Metric	
Wheel Diameter (D)	6 "
Wheel Width (T2)	1-5/8 "
Wheel installation — Hub Lenth (T1)	1-5/16 "
Wheel Mounting Bore Diameter	13/16 "
Keyway Width	1/2 "
Wheel Keyway Depth (H)	15/16
Load Capacity (Static)	1587lbs
Load Capacity at 4 km/h	1058lbs
Load Capacity at 6 km/h	899lbs
Load Capacity at 10 km/h	741lbs
Load Capacity at 16 km/h	423lbs
Hardness Of Tread	87±5° Shore A
Temperature	-4°F to +158°F
Tread Pattern	Diamond pattern + vertical stripe
Wheel centre/ rim	Iron core/galvanized
Non-Marking	Y
Conductive	N/A
Anti	N/A
Weight	4.1lbs
Standard	ISO22883

Advantages at a glance

Rolling Resistance	● ● ● ● ●
Operating Noise	● ● ● ● ●
Floor Surface Preservation	● ● ● ● ●

2D Dimensional Drawing of Drive Wheel



\* For any deviation between metric and imperial spec, please refer to the metric spec.