



QPU Series

Wheel Diameter × Wheel Width 150 x 40mm

EAN

YJ-12036306186279

Good elasticity, reduces pushing resistance, improves machine controllability, and has good wear resistance.  
Excellent Hydrolysis Resistance.  
Suitable for tropical regions and humid working environments.  
QPU, blue, surface machined with diamond + vertical texture.  
Increases grip on the ground, effectively improving anti-slip ability.

Wheel Center: cast iron core  
Wheel Tread: High-quality polyurethane



Picture may differ from original product

Product descriptions are for reference only. The actual product shall prevail.

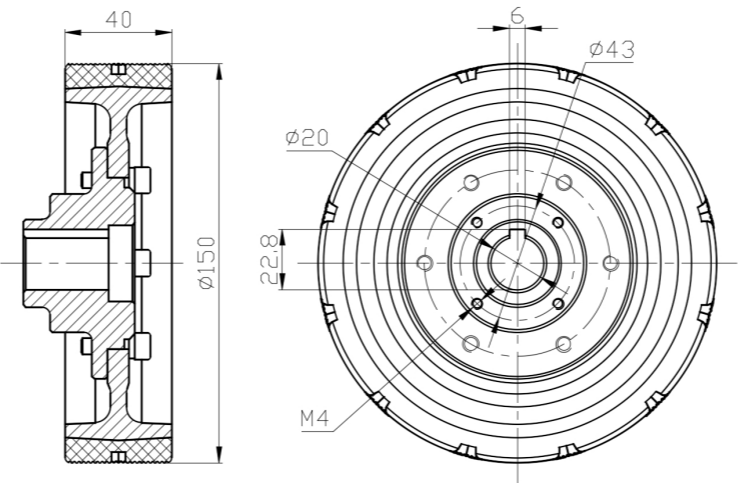
Technical Data

<input checked="" type="radio"/> Metric <input type="radio"/> Imperial	
Wheel Diameter (D)	150mm
Wheel Width (T2)	40mm
Wheel installation — Hub Lenth (T1)	32mm
Wheel Mounting Bore Diameter	20mm
Keyway Width	6mm
Wheel Keyway Depth (H)	22.8mm
Load Capacity (Static)	720kgs
Load Capacity at 4 km/h	480kgs
Load Capacity at 6 km/h	408kgs
Load Capacity at 10 km/h	336kgs
Load Capacity at 16 km/h	192kgs
Hardness Of Tread	87±5° Shore A
Temperature	-20°C to +70°C
Tread Pattern	Diamond pattern + vertical stripe
Wheel centre/ rim	Cast iron / spray-baked black paint
Non-Marking	Y
Conductive	N/A
Anti	N/A
Weight	2.0kgs
Standard	ISO22883

Advantages at a glance

Rolling Resistance	● ● ● ● ●
Operating Noise	● ● ● ● ●
Floor Surface Preservation	● ● ● ● ●

2D Dimensional Drawing of Drive Wheel



\* For any deviation between metric and imperial spec, please refer to the metric spec.