



## QPU Series

Wheel Diameter x Wheel Width 150 x 40mm

EAN

YJ-12036306186279

Good elasticity, reduces pushing resistance, improves machine controllability, and has good wear resistance.  
Excellent Hydrolysis Resistance.  
Suitable for tropical regions and humid working environments.  
QPU, blue, surface machined with diamond + vertical texture.  
Increases grip on the ground, effectively improving anti-slip ability.

Wheel Center: cast iron core

Wheel Tread: High-quality polyurethane



Picture may differ from original product

Product descriptions are for reference only. The actual product shall prevail.

## Technical Data

☒ Imperial ☐ Metric

Wheel Diameter (D)	6"
--------------------	----

Wheel Width (T2) 1-5/8 "

Wheel installation — Hub Lenth (T1) 1-5/16 "

Wheel Mounting Bore Diameter 13/16 "

Keyway Width 1/4 "

Wheel Keyway Depth (H) 15/16 "

Load Capacity (Static)	1587lbs
------------------------	---------

Load Capacity at 4 km/h	1058lbs
-------------------------	---------

Load Capacity at 6 km/h	899lbs
-------------------------	--------

Load Capacity at 10 km/h	741lbs
--------------------------	--------

Load Capacity at 16 km/h	423lbs
--------------------------	--------

Hardness Of Tread 87±5° Shore A

Temperature -4°F to +158°F

Tread Pattern Diamond pattern + vertical stripe

Wheel centre/ rim Cast iron / spray-baked  
black paint

Non-Marking	Y
-------------	---

Conductive	N/A
------------	-----

Anti	N/A
------	-----

Weight 4.4lbs

Standard ISO22883

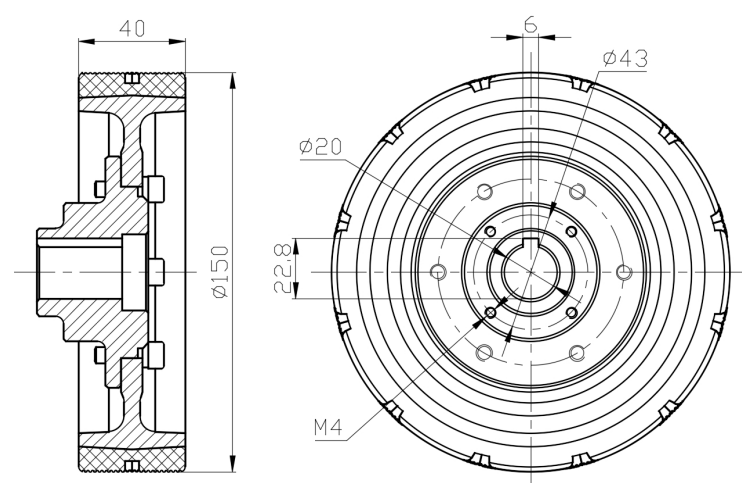
### Advantages at a glance

Rolling Resistance      ● ● ● ● ●

Operating Noise ● ● ● ● ●

Floor Surface Preservation ● ● ● ● ●

### 2D Dimensional Drawing of Drive Wheel



\* For any deviation between metric and imperial spec, please refer to the metric spec.