



QPU Series

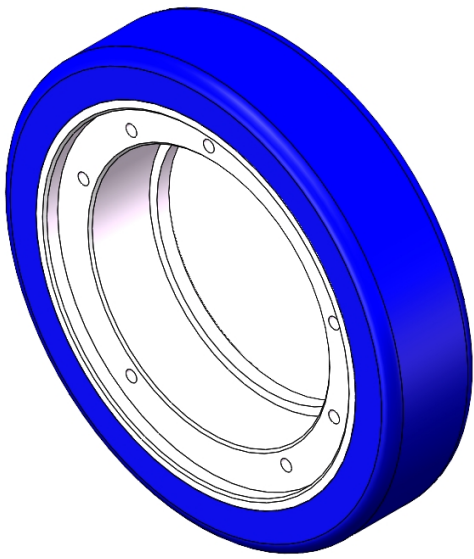
Wheel Diameter × Wheel Width 182 x 40mm

EAN

YJ-12036307180103

Good elasticity, reduces pushing resistance, improves machine controllability, and has good wear resistance.
Excellent Hydrolysis Resistance.
Suitable for tropical regions and humid working environments.
QPU, blue, surface machined with random texture.
Increases grip on the ground, effectively improving anti-slip ability.

Wheel Center: Iron core
Wheel Tread: High-quality polyurethane



Picture may differ from original product

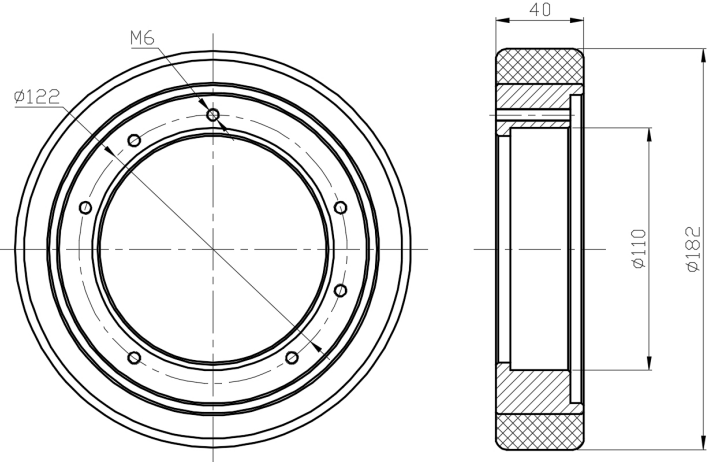
Technical Data

<input checked="" type="radio"/> Metric <input type="radio"/> Imperial	
Wheel Diameter (D)	182mm
Wheel Width (T2)	40mm
Wheel installation — Hub Lenth (T1)	—
Wheel center-bore diameter (d)	110mm
Wheel Mounting Bolt Hole PCD Diameter	—
Wheel Mounting Bolt Hole PCD	122mm
# Of Wheel mounting bolt boles	—
Wheel mounting bolt hole (M)	6
Number of wheel mounting bolt holes	7
Load Capacity (Static)	750kgs
Load Capacity at 4 km/h	500kgs
Load Capacity at 6 km/h	425kgs
Load Capacity at 10 km/h	350kgs
Load Capacity at 16 km/h	200kgs
Hardness Of Tread	87±5° Shore A
Temperature	-20°C to +70°C
Tread Pattern	—
Wheel centre/ rim	Iron core/galvanized
Non-Marking	Y
Conductive	N/A
Anti	N/A
Weight	2.68kgs
Standard	ISO22883

Advantages at a glance

Rolling Resistance	● ● ● ● ●
Operating Noise	● ● ● ● ●
Floor Surface Preservation	● ● ● ● ●

2D Dimensional Drawing of Drive Wheel



* For any deviation between metric and imperial spec, please refer to the metric spec.