

QPU Series

Wheel Diameter × Wheel Width 200 × 50 mm

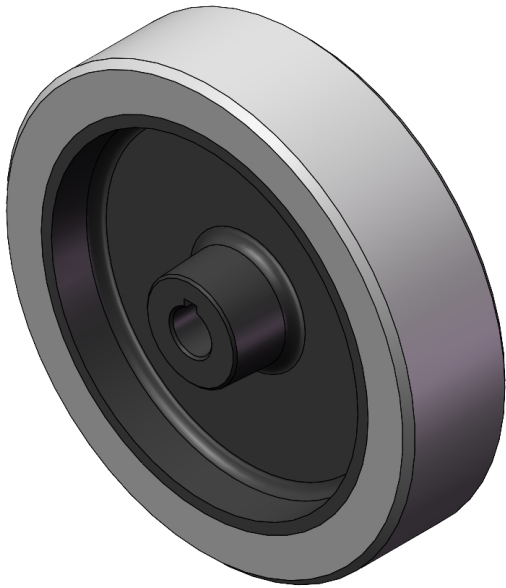
EAN

YJ-12036308206101

Good elasticity, reduces pushing resistance, improves machine controllability, and has good wear resistance.
Excellent Hydrolysis Resistance.
Suitable for tropical regions and humid working environments.
QPU gray surface with machined random texture.
Increases grip on the ground and effectively improves anti-slip ability.

Wheel Center: cast iron core
Wheel Tread: High-quality polyurethane

Product descriptions are for reference only. The actual product shall prevail.



Picture may differ from original product

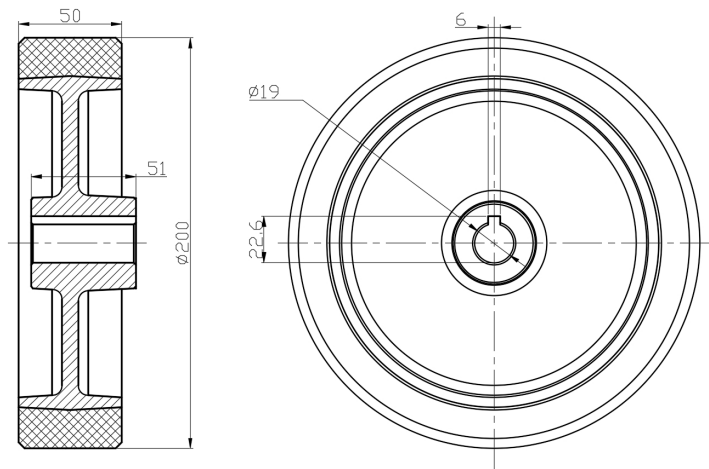
Technical Data

<input checked="" type="radio"/> Imperial <input type="radio"/> Metric	
Wheel Diameter (D)	8 "
Wheel Width (T2)	2 "
Wheel installation — Hub Lenth (T1)	1-15/16 "
Wheel Mounting Bore Diameter	3/4 "
Keyway Width	1/4 "
Wheel Keyway Depth (H)	15/16 "
Load Capacity (Static)	1389lbs
Load Capacity at 4 km/h	2083lbs
Load Capacity at 6 km/h	1388lbs
Load Capacity at 10 km/h	1180lbs
Load Capacity at 16 km/h	555lbs
Hardness Of Tread	77±5° Shore A
Temperature	-4°F to +158°F
Tread Pattern	garbled text pattern
Wheel centre/ rim	Cast iron / spray-baked black paint
Non-Marking	N/A
Conductive	N/A
Anti	N/A
Weight	6.9lbs
Standard	ISO22883

Advantages at a glance

Rolling Resistance	● ● ● ● ●
Operating Noise	● ● ● ● ●
Floor Surface Preservation	● ● ● ● ●

2D Dimensional Drawing of Drive Wheel



* For any deviation between metric and imperial spec, please refer to the metric spec.