

QPU Series

Wheel Diameter × Wheel Width 200 x 80mm

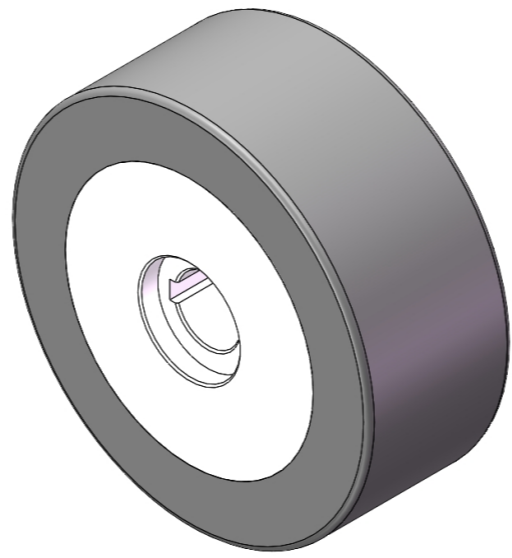
EAN

YJ-12036308330203

It has good elasticity, reduces pushing resistance, improves machine controllability, and has good wear resistance.  
It has excellent Hydrolysis Resistance.  
Suitable for tropical regions and humid working environments.  
QPU Gray

Wheel Center: Iron core  
Wheel Tread: High-quality polyurethane

Product descriptions are for reference only. The actual product shall prevail.



Picture may differ from original product

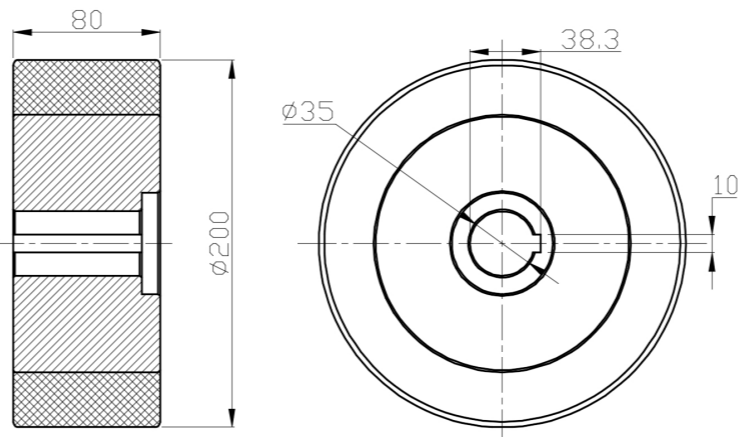
Technical Data

<input checked="" type="radio"/> Metric <input type="radio"/> Imperial	
Wheel Diameter (D)	200mm
Wheel Width (T2)	80mm
Wheel installation — Hub Lenth (T1)	—
Wheel Mounting Bore Diameter	35mm
Keyway Width	10mm
Wheel Keyway Depth (H)	38.3mm
Load Capacity (Static)	1260kgs
Load Capacity at 4 km/h	840kgs
Load Capacity at 6 km/h	714kgs
Load Capacity at 10 km/h	588kgs
Load Capacity at 16 km/h	336kgs
Hardness Of Tread	77±5° Shore A
Temperature	-20°C to +70°C
Tread Pattern	—
Wheel centre/ rim	Iron core/galvanized
Non-Marking	Y
Conductive	N/A
Anti	N/A
Weight	10.34kgs
Standard	ISO22883

Advantages at a glance

Rolling Resistance	• • • • •
Operating Noise	• • • • •
Floor Surface Preservation	• • • • •

2D Dimensional Drawing of Drive Wheel



\* For any deviation between metric and imperial spec, please refer to the metric spec.