



QPU Series

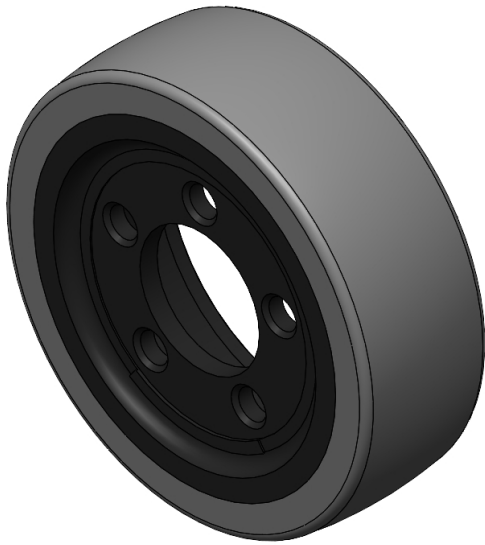
Wheel Diameter × Wheel Width 250 x 82mm

EAN

YJ-12036311336201

It has good elasticity, reduces pushing resistance, improves machine tool operability, and has good wear resistance.  
It has excellent Hydrolysis Resistance.  
Suitable for tropical regions and humid working environments.  
QPU, gray, Wheel Tread profile: Crown

Wheel Center: cast iron core  
Wheel Tread: High-quality polyurethane



Picture may differ from original product

Product descriptions are for reference only. The actual product shall prevail.

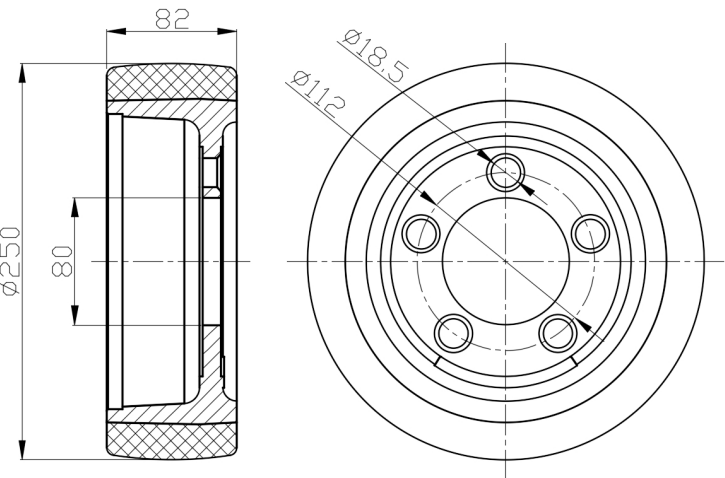
Technical Data

<input checked="" type="radio"/> Metric <input type="radio"/> Imperial	
Wheel Diameter (D)	250mm
Wheel Width (T2)	82mm
Wheel installation — Hub Lenth (T1)	—
Wheel center-bore diameter (d)	80mm
Wheel Mounting Bolt Hole PCD Diameter	18.5 mm
Wheel Mounting Bolt Hole PCD	112mm
# Of Wheel mounting bolt boles	5
Wheel mounting bolt hole (M)	—
Number of wheel mounting bolt holes	—
Load Capacity (Static)	1440kgs
Load Capacity at 4 km/h	960kgs
Load Capacity at 6 km/h	816kgs
Load Capacity at 10 km/h	672kgs
Load Capacity at 16 km/h	384kgs
Hardness Of Tread	77±5° Shore A
Temperature	-20°C to +70°C
Tread Pattern	—
Wheel centre/ rim	Cast iron / spray-baked black paint
Non-Marking	Y
Conductive	N/A
Anti	N/A
Weight	7.25kgs
Standard	ISO22883

Advantages at a glance

Rolling Resistance	• • • • •
Operating Noise	• • • • •
Floor Surface Preservation	• • • • •

2D Dimensional Drawing of Drive Wheel



\* For any deviation between metric and imperial spec, please refer to the metric spec.